



PRABHAT POWERTECH PVT LTD

Turnkey Electrification contractors & Manufacturer of custom built panel boards

4 DECADES AT YOUR SERVICE

Head Office:

**128,ASHOK INDUSTRIAL ESTATE,
L.B.S.MARG,BHANDUP(W),
MUMBAI -400078.
TEL: 022 46028222/022 2596 1550
EMAIL:info@prabhatelectric.com**

Mahape works:

**EL-53, ELECTRONIC ZONE,
TTC, MIDC,
NAVI MUMBAI -400709.
TEL: 022 69020334, 9136239406
EMAIL:panel@prabhatelectric.com**

WEB SITE: www.prabhatelectric.com



PRABHAT POWERTECH PVT. LTD.

VISION

CORE PURPOSE

TO SWITCH TOWARDS A BETTER FUTURE BY PROVIDING SAFE, EFFICIENT AND ECONOMIC SYSTEMS.

CORE VALUES

1. ATTENTION TO DETAIL
2. CONTINUOUS IMPROVEMENT IN EVERYTHING WE DO
3. MAXIMIZATION OF RESOURCES, i.e., PEOPLE, MATERIAL AND ENERGY.
4. ENTREPRENEURIAL SPIRIT AND NO ENTITLEMENT ATTITUDE.

BRAND PROMISE

"COMMITTED TO VALUE ADDITION"

Certificate of Registration

This Certificate is issued to

PRABHAT POWERTECH PRIVATE LIMITED

124/128 Ashok Industrial Premises NR. Shangrila Biscuits Factory LBS
Marg, Bhandup (W) Mumbai-400078,(Maharashtra)

Compliance With
Quality Management System

ISO 9001:2015

For the following Scope

Turnkey Electrical Contracting Services, Design, Manufacturing, Supply Of Electrical Control Panels, Including Supply & Installation Of Low Voltage System viz CCTV, Fire Alarm, Access Control and BMS

Certificate No. : QMS/0322/6417
Original Certificate Date : 13-04-2022
Issue Date : 13-04-2022
Expiry Date : 12-04-2025
Certificate Verification <http://ukacl.org.uk/certified-organization.php>

Authorised Signature

For Square Quality Certification

Head Office : 101, Dharshan Vihar, Nathupura,
Burari, Delhi, India

UK Office : 20-22 Wenlock Road,
London, N1 7GU, UK



*This certificate doesn't provide the certified organizations with immunity from the legal obligation
This certificate remains the property of Square Quality Certification to whom it must be returned on request*

INDEX

| Sr.No. | Description | Page No. |
|------------|--|-----------|
| I. | PROJECT DIVISION | |
| 1. | About Us | 6 |
| 2. | Registration & Licenses | 7 |
| 3. | Our Specialties & Strength | 8 |
| 4. | Our Track Record | 9 |
| 5. | Types of Projects We Undertake | 10 |
| 6. | Other Areas Of Operation | 11 |
| 7. | Our Quality Policy | 12 |
| 8. | Our Safety Policy | 13 |
| 9. | Major Clienteles | 16 |
| 10. | Major Architects We Have Associated With | 18 |
| 11. | Major Consultants We Have Associated With | 24 |
| 12. | Few Landmark Projects | 25 |
| 13. | Projects Under Execution | 26 |
| 14. | Major Projects Executed | 34 |
| 15. | 12.1 Shopping Malls | |
| | 12.2 Hotels / Hospitals / Schools | 38 |
| | 12.3 Multiplexes | 41 |
| | 12.4 Commercial Complexes / IT / Corporate Parks | 47 |
| | 12.5 Industrial | 53 |
| | 12.6 Residential | 58 |
| | Our Organization Strength | 61 |
| 13. | List of Tools & Tackles | 67 |
| 14. | Testing Equipment's | 70 |
| II. | MANUFACTURING DIVISION | 72 |
| 1. | About Us | 73 |
| 2. | In - House Process | 74 |
| 3. | Quality Policy | 77 |
| 4. | Testing Facility | 78 |
| 5. | Few Landmark PROJECTS | 79 |
| 6. | Our Capabilities | 80 |
| 7. | Product Range | 81 |
| 8. | Major Clienteles | 82 |
| 9. | Major Projects Executed | 83 |
| 10. | List of Machineries | 89 |
| 11. | Certificates & Appreciations | 90 |

ABOUT US

We take immense pleasure & pride in introducing ourselves as highly efficient, professionally managed electrical contracting company; engaged in the execution of large turnkey projects. We are also leading manufacturer & exporters of LT Electrical Panels, bus ducts, rising mains & control panel etc. We at Prabhat, have consistently & constantly enjoyed the reputation of delivering quality to our **esteemed** clients & also are accomplished to complete the project from concept to commissioning stages within the stipulated schedules.

With great humility & gratitude towards all our esteemed customers, we at Prabhat are in the field of electrification services, since the year 1982. We stand unique with more than **40 years** of massive experience and relentless services in the contracting and manufacturing field with highly supportive, efficient, professional management & human resource team. Our sprawling list of repetitive clientele list itself is a testimonial of our commitment towards the work.

REGISTRATION & LICENCES

| | |
|--|-----------------|
| ➤ PWD License No | MC 29463 |
| ➤ GST NO | 27AAACP4900D1ZW |
| ➤ SSI REGN NO | 270211100281 |
| ➤ PAN NO | AAACP4900D |
| LICENCES FOR THE OTHER STATES CAN BE ARRANGED | |

OUR SPECIALITIES & STRENGTHS

- Head office with ultra-modern facilities and experienced engineering and management staff for preparing detailed engineering, optimization and Cost reduction techniques.
- In-house SSI registered manufacturing set up of independent **1000 sq. mtr.** factory with most modern equipment's for fabrication and assembly of LT panel boards up to 6000A.
- We are capable of offering custom built control panels including Motor control centers, Power control centers, Distribution boards, Busbar chambers, Feeder pillars, Instrumentation logic panels etc.
- Close tie-ups with all original equipment manufacturers for quality materials in very little lead time.
- We have comprehensive support system to cater to our customer needs at all the times and in the moment of urgency our team is trained to act first. Lighting fast
- Our team is capable of taking initiative unhesitatingly with any site coordination agency like Architects, Consultants, and project management team for smooth functioning of the site.
- We recognize trust and ethics as important components to any progressive relationship we get to work even before getting the Letter of Intent.

OUR TRACK RECORD

- More than 30 years of experience in the Field
- We have executed almost all types of work from Residential towers to Commercial Complexes, Hotels, Hospitals, Data Centers, Multiplexes, Switchyards, and Relocations etc.
- Experienced in high rise towers up to 92 floors in MIVAN shuttering environment with slab cycle of 6 days.
- As far as residential projects are concerned, we are proud to say that we have worked with almost all the leading Builders and Developers in Mumbai.
- We are also specialized in multiplex projects having executed more than 50 multiplex projects all over India.
- We maintain well equipped centralized warehouse with minimum stock of most of the standard materials. This helps us to execute any type of fast-track projects well within the scheduled time
- **Timely payment to our Vendors ensures on time unhindered delivery of all ordered materials at sites/Factory facilitating timely completion of work.**
- We are well equipped with the latest ERP software & Service networks which enables us to meet our client's requirements efficiently & effectively.
- On site Assessment of requirements in design and execution of the same.

TYPES OF PROJECT WE UNDERTAKE

- Residential Complexes, Townships & Multi-storey Towers.
- Commercial Complexes, Malls, Supermarkets & Hospitals.
- Star Category Hotels.
- Modern food courts & Restaurants.
- Multiplexes & Auditoriums.
- Modern Ware houses.
- Data Centre, Call Centre & BPO Companies.
- Corporate Offices.
- Industrial Houses, Large Industrial Sheds & Factories.
- HV, EHV Switchyards and substations.
- Captive Power Generation Stations.
- We also undertake complete design and execution of Revamping and Relocation of existing electrical systems.
- Energy Audit and Energy Management systems.

OTHER AREAS OF OPERATION

- Fire alarm system.
- Security and surveillance system.
- Access Control system.
- Computer Networking, Data and Voice system.
- Complete building management system.
- Public Addressing System.

OUR QUALITY POLICY

Quality and safety being the important aspect of the project; we at Prabhat strictly adhere to the same with well-coordinated guidelines:

- SOP is in place for checking the quality of material and workmanship
- Detailed conduit layout drawings done prior to the starting of the work with proper location finalized as per requirement.
- Conduit Clearance report generated during slab conduiting and similarly wiring stage with report on wiring and so on.
- All the Material Procured from principal manufacturers **to ensure delivery of high-quality materials.**

Testing equipment are calibrated **Periodically** at time to time.

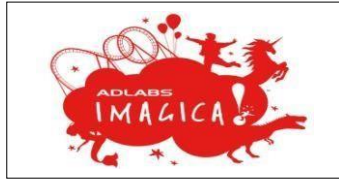
OUR SAFETY POLICY

Safety is the utmost priority in all our sites and strict adherence to the safety policy is maintained.

- Personal Safety items like Helmets, safety belts and safety shoes are mandatory at site.
- Ledgers are maintained at site to record the issue of the safety items to the workers and wearing of the same is strictly monitored maintained at site with penalty clause.
- Site office & the stores are equipped with fire prevention and the house keeping of the same is well maintained.
- Workmen Compensation, CAR policy is implemented at site.



MAJOR CLIENTELE



- **M/s. Adlabs Entertainment Ltd.**
Mumbai.



- **M/s. Transcon Developers**
Mumbai.



- **M/s. Indian Institute of Technology.**
IIT, Powai, Mumbai.



- **M/s. Tata Housing Dev. Co. Ltd.**
Nelco Complex, Andheri, Mumbai.



- **M/s. Lodha Developers Pvt. Ltd.**
Lodha Excelus, Mahalaxmi, Mumbai -



- **M/s. Raheja Universal**
CST Road, Kalina, Santacruz (E),
Mumbai -98



- **M/s. Kalpataru Constructions Pvt Ltd.**
111, Maker Chamber,
Nariman Point, Mumbai.



- **M/s. Marathon Group.**
Bhandup Sonapur Junction
Mulund, Mumbai.



- **M/s. Shree Naman Group**
Bandra Kurla Complex



- **M/s.Godrej Properties Ltd.**
Godrej Bhavan Fort,
Mumbai.



- **M/s. Hirani Group**
Hinal Heritage , Borivili
(W), Mumbai



- **M/s.Lokandhwala**
Construction
Mumbai.



- **M/s.Taj President Hotel,**
Colaba, Mumbai



- **M/s.Mahanagar Gas Ltd.**
Mumbai.



- **M/s. Mirah Group**
Sun Mill Compound,
Lower Parel (W), Mumbai



- **M/s. Neelkanth Group**
Ghatkopar, Mumbai.



- **M/s.Unity Infraprojects Ltd.**
Worli, Mumbai.



- **M/s.D. S. Kulkarni Group,**
Pune.



- **M/s.K.Raheja Corp.**
Bandra Kurla Complex
Bandra (E)



- **M/s.Hindustan Construction Co.**



- **M/s. Shahpoorji Pallonji & Co. Ltd.**



- **M/s.Blue dart Ltd.**
Mumbai.



- **Nehru Centre (Nehru Planitorium)**
Worli, Mumbai.



- **M/s. Mukesh Group of Companies**
Santacruz (W), Mumbai



- **Reserve Bank Of India,**
Mumbai



- **Nasik City centre Mall (Sarda group)**
Nashik ,Maharashtra.



- **M/s. HEDE Business Group**
Colaba, Mumbai.



- **M/s. Nirmal Group**
Mulund (W), Mumbai



- **M/s.Adlabs Films Ltd. (Reliance Big Cinemas)**
Mumbai.



- **SD Corporation Pvt. Ltd**
Colaba, Mumbai 400005,
Maharashtra, INDIA



- **Runwal Group**
Sion, Mumbai 400022,
Maharashtra, INDIA



- **Peninsula Land**
Lower Parel, Mumbai -400013



- **Nandivardhan Group**
Thane & Mumbai.

- **M/s. Sai Enterprises**
Manera Compound, Thane (West), Mumbai.
- **M/s. Sunjana Developers**
Thane.
- **M/s. Raikar Group**
Hotel Pearl, Chembur, Mumbai.
- **M/s. Tache Jewellery Pvt. Ltd.**
Mumbai.
- **M/s. East India Hotels Ltd.**
Hotel Hilton Towers, Mumbai.

MAJOR ARCHITECTS WE HAVE ASSOCIATED WITH

- IRANI ARCHITECTS
- ARCHITECT HAFEEZ CONTRACTOR
- F. T. KHAREGHAT & ASSOCIATES
- J. P. PAREKH & SONS
- SANJAY PURI ARCHITECTS
- DEEPAK MEHTA ARCHITECTS
- DAHISARIA & ASSOCIATES
- STRUCTWEL CONSULTANTS PVT. LTD.
- JHAVERI & JHAVERI ARCHITECTS
- SOMAYA & KALAPPA ASSOCIATES
- ACCESS ARCHITECTS
- BHARATH SHETTY ARCHITECTS
- ABHOY SHAH ARCHITECTS
- REZA KABUL ARCHITECTS
- 3D ARCHITECTURE
- EDIFICE CONSULTANTS PVT. LTD.
- De-Sign LAB ARCHITECTS
- RSP DESIGN CONSULTANTS (I) PVT. LTD.
- PIRAMAL SONS (I) PVT. LTD.
- TALATI & PANTHAKY ARCHITECTS
- KAPADIA ASSOCIATES DESIGN LLP
- ARCHETYPE CONSULTANTS (I) PVT. LTD.

MAJOR CONSULTANTS WE ASSOCIATE WITH

- DESIGN BUREAU CONSULTANTS PVT LTD
- ESKAYEM CONSULTANTS PVT LTD
- TATA CONSULTING ENGINEERS, WORLI
- VOLTECH ELECTROMECHANICALS
- EMKAY CONSULTANTS
- D.R.BELLARE ELECTRICAL CONSULTANTS
- SEMBCORP INFRASTRUCTURES PVT LTD.
- CARDOZ CONSULTING ENGINEERS
- UBTECH CONSULTING ENGINEERS
- ELECTRO-MECH CONSULTANTS
- HYDROMECHANICAL CONSULTANTS PVT LTD
- VIKAS JOSHI & ASSOCIATES
- C.D.BAHULEKAR & ASSOCIATES
- STRUCTWEL CONSULTANTS PVT LTD
- SHET TECHNO CONSULTANTS
- JOHN MECH-EL TECHNOLOGIES PVT. LTD.
- WSP ENGINEERS
- MEP CONSULTANTS.
- C RAMCHANDANI CONSULTANTS
- DIKSHIT CONSULTANTS & ENGINEERS PVT. LTD.
- PANKAJ DHARKAR & ASSOCIATES
- S N JOSHI CONSULTANTS PVT. LTD
- CLANCY GLOBAL CONSULTING ENGINEERS
- RAMBOLL INDIA PVT. LTD.
- AECOM

FEW LANDMARK PROJECTS



MARATHON FUTUREX

38 STOREY COMMERCIAL COMPLEX

LARGEST COMMERCIAL COMPLEX IN INDIA.

10 LACS SQ FT.

RADISSON 5 STAR HOTEL

68 ROOMED 5 STAR HOTELS WITH RESTAURANTS, BANQUET HALLS, SWIMMING POOL and GYM & HEALTH CLUB.



MARATHON MONTEVISTA RESIDENTIAL

33 STOREY TOWER

WITH MIVAN SHUTTERING ENVIRONMENT.

LOTUS IT PARK – THANE.

IT PARK WITH MODERN AMMENETIES.





LOKHANDWALA FOUNDATION SCHOOL

A MODERN SCHOOL BUILDING AT KANDIVALI. MUMBAI.

ADLABS MULTIPLEX
A 5 SCREEN MULTIPLEX AT MANGALORE
COMPLETED WITHIN 45 DAYS



SUNMAGNETICA
A SHOPPING MALL AT THANE WITH COMMISSIONING OF 1500KVA, 11KV/433V SUBSTATION AND OTHER INTERNAL WORKS

DSK DURGAMATA TOWER
35 STOREY RESIDENTIAL TOWER WITH SUPER EXCLUSIVE APARTMENTS AT CUFFEPARADE, MUMBAI





NIRMAL LIFESTYLES
LARGEST SHOPPING MALL
HOUSING MAJOR BRANDS IN
MULUND, MUMBAI

PLANET GODREJ
46 STOREY 5 TOWER - ONE OF
THE TALLEST RESIDENTIAL
TOWER IN MUMBAI WITH
MIVAN SHUTTERING.



MARATHON ERA
35 STOREY 4 RESIDENTIAL
TOWERS WITH MIVAN
SHUTTERING.

RAHEJA XION , BUYCULLA
5 STOREY COMMERCIAL
COMPLEX





**RAHEJA SERINITY ,
KHANDIVILI**

20 STOREY 3 RESIDENTIAL
TOWERS
WITH MIVAN SHUTTERING.

**LODHA CASA BELLA,
DOMBIVILI**

18 STOREY 4 RESIDENTIAL
TOWERS

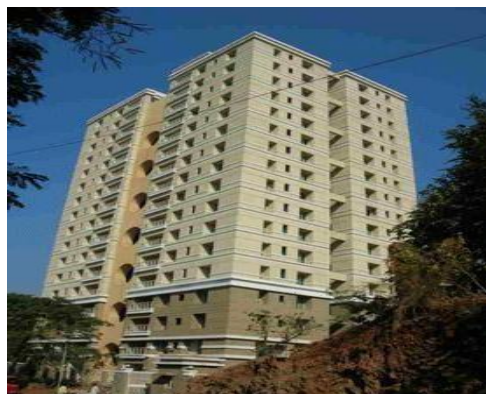


LODHA CASA RIO , DOMBIVILI

8 STOREY 25 RESIDENTIAL
TOWER WITH 4 CLUSTER

**IIT B-23 FACULTY HOUSING
POWAI.**

16 STOREY RESIDENTIAL
TOWERS FOR FACULTY AT
I.I.T, MUMBAI.





**IIT CONVENTION CENTRE,
POWAI.**
**Electrical works of Indoor
/outdoor sports utility as IIT
Bombay-Powai**

**NEPTUNE-
UPTOWN,
MULUND (W).**

**Commercial
complex with
modern
amenities**



NAMAN MID-TOWN

**22 STORYED COMMERCIAL
COMPLEXES.**

**Commercial complex with
modern amenities**



ROSA BELLA , THANE

**29 STOREY RESIDENTIAL
COMPLEX**



ADLABS IMAGICA THEME PARK

INTERNATIONAL LEVEL
AMUSEMENT THEME PARK
Water park, in approx. 200 Acres
of area with 22Kv substations,
Internal electrical work ,external
electrical work complete.



5 STAR -NOVOTEL IMAGICA HOTEL

300 ROOMED 5 STAR HOTEL with
all modern amenities at Adlabs Imagica
Khopoli.



LOKHANDWALA MINERVA

Supertall Skyscraper Residential
Tower with all modern Amenities
in Mumbai,

PROJECTS UNDER EXECUTION

| | |
|---------------------------|--|
| Project | MARATHON NEXZONE (RESIDENTIAL COMPLEX) |
| Clients | SANVO RESORTS PVT. LTD. |
| PROJECT HIGHLIGHTS | SUPPLY, INSTALLATION, TESTING & COMISSIONG OF ELECTRICAL WORK FOR MARATHON NEXZONE-ALTIS (TYPE C), AVIOR (TYPE D) AND COMMON AREA OF C AND D BUILDING. |
| Architects | SURESH BABU & PARTNERS |
| Service Consultant | ESKAYEM CONSULTANTS PVT LTD |
| Location | PANVEL, NAVI MUMBAI. |

| | |
|---------------------------|--|
| Project | KALPATARU AVANA |
| Clients | KALPATARU LTD |
| PROJECT HIGHLIGHTS | ELECTRICAL WORK OF TOWER A & B INCLUDING SALE PARKING AREA AT KALPATARU AVANA,PAREL. |
| Architects | HAFEEZ CONTRACTOR |
| Service Consultant | PANKAJ DHARKAR & ASSOCIATES |
| Location | PAREL,MUMBAI |

| | |
|---------------------------|--|
| Project | MARATHON FUTUREX (COMMERCIAL) |
| Clients | MARATHON REALTY PVT. LTD. |
| PROJECT HIGHLIGHTS | 38 STORYED COMMERCIAL TOWER (TALLEST COMMERCIAL COMPLEX IN INDIA) |
| Architects | ANUPAM ASSOCIATES |
| Service Consultant | ESKAYEM CONSULTANTS PVT. LTD. |
| Location | LOWER PAREL, MUMBAI. |

| | |
|---------------------------|---|
| Project | NANDIVARDAN SIVANTA |
| Clients | MERIDIAN BUILDPRO PRIVATE LIMITED |
| PROJECT HIGHLIGHTS | 28 STORED RESIDNETIAL & COMMERCIAL BUILDING |
| Architects | ARCHETYPE CONSULTANT |
| Service Consultant | ESKAYEM CONSULTANTS PVT.LTD. |
| Location | PANCHPAKHADI , THANE |

| | |
|---------------------------|--|
| Project | RAHEJA VISTAS T10 & T9 |
| Clients | INORBIT MALLS (INDIA) PVT. LTD. |
| PROJECT HIGHLIGHTS | 33 + TERRACE STOREY RESIDENTIAL BUILDING |
| Architects | SBA ARCHITECTS & DESIGNERS PVT. LTD. |
| Service Consultant | URJA BUILDING SERVICES CONSULTANTS |
| Location | PUNE |

| | |
|---------------------------|-----------------------------------|
| Project | RAHEJA VIVARIA |
| Clients | GENEXT HARDWARE & PARKS PVT. LTD. |
| PROJECT HIGHLIGHTS | 51 STOREY RESIDENTIAL BUILDING |
| Architects | ATUL DESAI CONSULTANTS |
| Service Consultant | PANKAJ DHARKAR AND ASSOCIATES |
| Location | MAHLAXMI ,MUMBAI |

| | |
|---------------------------|--|
| Project | MONTESOUTH KHATAU MILLS BYCULLA-TOWER B |
| Clients | SWAYAM RELATORS & TRADERS LLP |
| PROJECT HIGHLIGHTS | 64 STOREY RESIDENTIAL BUILDING |
| Architects | HAFEEZ CONTRACTOR |
| Service Consultant | MEP CONSULTING ENGINEERS |
| Location | BYCULLA(W), MUMBAI |

| | |
|---------------------------|--|
| Project | KAKKAD ESTATE |
| Clients | SILVER GROUP |
| PROJECT HIGHLIGHTS | 13 STOREY SALES TOWER & 16 STOREY REHAB TOWER. |
| Architects | MALIK ARCHITECT |
| Service Consultant | GLOBAL ENGINEERING SERVICES |
| Location | GHATKOPAR WEST |

| | |
|---------------------------|-----------------------------------|
| Project | RITZ HOTEL |
| Clients | RITZ PVT. LTD. |
| PROJECT HIGHLIGHTS | 6 STOREY, 91 ROOMS HOTEL BUILDING |
| Architects | P.G. PATKI ARCHITECT PVT. LTD. |

| | |
|---------------------------|---|
| Service Consultant | GRUNE DESIGNS PVT. LTD. |
| Location | CHURCHGATE ,MUMBAI |
| Project | VICEROY PRIVE |
| Clients | SIMBA PROPERTIES LLP |
| PROJECT HIGHLIGHTS | 40 STOREY RESIDENTIAL TOWER, WITH 56 NOS. OF 4 BHK FLATS, 7 NOS. OF 5 BHK FLATS AND 2 NOS. OF PENTHOUSE. TOTAL 65 FLATS |
| Architects | RSP DESIGN CONSULTANTS (INDIA) PVT. LTD. |
| Service Consultant | MEP CONSULTING ENGINEERS |
| Location | KANDIVILI (EAST), MUMBAI |

MAJOR PROJECTS EXECUTED

SHOPPING MALLS

| | |
|---------------------------|--|
| Project Name | NASIK CITY CENTER MALL |
| Clients Name | NASIK CITY CENTER MALL(BARDA GROUP) |
| Scope of Work | COMPLETE INTERNAL & EXTERNAL ELECTRIFICATION OF INDUSTRIAL HOUSE WITH FULL FLEDGED OFFICE BLDG,CANTEEN & WORKER QUARTRES ETC. AREA OF DEVLOPMENT:-4 LACS SQ.FT |
| Architects | OS2 ARCHITECTS |
| Service Consultant | SETH TECHNO CONSULTANTS PVT.LTD |
| Location | NASIK,MAHARASTRA |
| Completion Year | 2009 |

| | |
|---------------------------|--|
| Project Name | SUN MAGNETICA |
| Clients Name | KARNAVAT & ASSOCIATES |
| Scope of Work | WORK WITH COMMISSIONING OF 1500KVA,11KV/433V SUBSTATION AND OTHER INTERNAL WORKS |
| Architects | SANJAY PURI ARCHITECT |
| Service Consultant | ESKAYEM CONSULTANTS PVT. LTD. |
| Location | THANE |
| Completion Year | 2007 |

| | |
|---------------------------|---|
| Project Name | CENTRIA SHOPPING COMPLEX |
| Clients Name | LOKHANDWALA CONSTRUCTION INDS. PVT. LTD. |
| Scope of Work | COMPLETE INTERNAL & EXTERNAL ELECTRIFICATION OF SHOPPING MALL & COMPLEX |
| Architects | LOKHANDWALA CONSTRUCTION INDS. PVT. LTD. |
| Service Consultant | |
| Location | KANDIVALI, MUMBAI |
| Completion Year | 2007 |

| | |
|---------------------------|--|
| Project Name | LAKE CITY MALL |
| Clients Name | SIDDHI PROPERTIES PVT. LTD. |
| Scope of Work | SHOPPING MALL HOUSING ALL MAJOR BRANDS LIKE BIGBAZAR, PANTALON, MULTIPLEX, MC'DONALDS ETC. |
| Architects | S.M.P.S ARCHITECT. |
| Service Consultant | SHETH TECHNO CONSULTANTS PVT. LTD. |
| Location | MAJIWADA, THANE. |
| Completion Year | 2007 |

| | |
|---------------------------|---|
| Project Name | HIGH STREET PHOENIX |
| Clients Name | PHOENIX MILLS LTD |
| Scope of Work | COMPLETE ELECTRIFICATION OF SHOPPING MALL & COMPLEX |
| Architects | INHOUSE ARCHITECTS |
| Service Consultant | M/S.SARASWAT ENGINEERING SERVICES |
| Location | LOWER PAREL, MUMBAI. |
| Completion Year | 2003 |

| | |
|---------------------------|---|
| Project Name | NIRMAL LIFESTYLES |
| Clients Name | NIRMAL GROUP |
| Scope of Work | COMPLETE ELECTRIFICATION OF SHOPPING MALL & COMPLEX SHOPPING MALL AT MULUND MUMBAI |
| Architects | ARCHITECT HAFEEZ CONTRACTOR |
| Service Consultant | SPECTRAL SERVICES CONSULTANTS PVT LTD |
| Location | MULUND MUMBAI |
| Completion Year | 2005 |

| | |
|-----------------------------------|------------------------------|
| Project Name | M2K LUDHIANA |
| Clients | M2K GROUP DELHI |
| PROJECT HIGHLIGHTS | 3 SCREEN MULTIPLEX |
| Architects | ERANA ARCHITECTS |
| Service Consultant | CUTECH CONSULTANTS PVT. LTD. |
| Location | LUDHIANA, PUNJAB. |
| EXPECTED COMPLTN. DATE | FEB-2011 |

| | |
|---------------------------|--|
| Project Name | EASE ZONE MALL |
| Clients | KEYSTONE REALTORS PVT. LTD. |
| PROJECT HIGHLIGHTS | TOTAL ELECTRIFICATION WORK OF EASE ZONE SHOPPING MALL |
| Architects | REZA KABUL ARCHITECTS |
| Service Consultant | HYDROMECHANICAL CONSULTANTS PVT. LTD. |
| Location | GOREGAON, MUMBAI. |

**MAJOR PROJECTS EXECUTED
HOTELS / HOSPITALS / SCHOOL**

| | |
|---------------------------|---|
| Project Name | IIT GIRLS HOSTEL |
| Clients | INDIAN INSTITUTE OF TECHNOLOGY, MUMBAI |
| PROJECT HIGHLIGHTS | TOTAL ELECTRIFICATION & FIRE PROTECTION, FIRE ALARAM, PUBLIC ADDRESSING SYSTEM WORK FOR GIRLS HOSTEL NO-10. |
| Architects | SANDEEP SHIRKE & ASSOCIATES |
| Service Consultant | SPECTRAL SERVICES PVT. LTD. |
| Location | POWAI, MUMBAI |

| | |
|---------------------------|--|
| Project Name | IIT LIBRARY |
| Clients | INDIAN INSTITUTE OF TECHNOLOGY, MUMBAI |
| PROJECT HIGHLIGHTS | RENOVATION, ADDITION & ALTERNATION TO CENTRAL LIBRARY AT IIT BOMBAY PART-III (ELECTRICAL WORK) AT IIT BOMBAY |
| Architects | SANJAY UDMALE ARCHITECT |
| Service Consultant | CUTECH CONSULTING ENGINEERS PVT LTD. |
| Location | POWAI, MUMBAI |

| | |
|---------------------------|---|
| Project Name | IIT GYMKHANA |
| Clients | INDIAN INSTITUTE OF TECHNOLOGY, MUMBAI |
| PROJECT HIGHLIGHTS | TOTAL ELECTRIFICATION WORK FOR IIT GYMKHANA BUILDING. |
| Architects | SANDEEP SHIRKE & ASSOCIATES |
| Service Consultant | CUTECH CONSULTING ENGINEERS PVT LTD. |
| Location | POWAI, MUMBAI |

| | |
|---------------------------|--|
| Project Name | ADLABS PARK HOTEL |
| Clients | ADLABS ENTERTAINMENT LTD |
| PROJECT HIGHLIGHTS | SUPPLY, INSTALLATION, TESTING & COMMISSIONING OF IBMS CABLING WORK FOR ADLABS HOTEL PROJECT 300 ROOMS 5 STAR HOTEL |
| Architects | ARCHITECT BHARAT SHETTY |
| Service Consultant | MEP CONSULTING ENGINEERS |
| Location | KHALAPUR, KHOPOLI |

| | |
|---------------------------|--|
| Project Name | IIT HOSTEL SUBSTATION |
| Clients | INDIAN INSTITUTE OF TECHNOLOGY, MUMBAI |
| PROJECT HIGHLIGHTS | POWER SUPPLY IN HOSTEL SUBSTATION-1 TO PROVIDE SUPPLY TO NEW 'B' TYPE AT IIT |
| Architects | INDIAN INSTITUTE OF TECHNOLOGY |
| Service Consultant | |
| Location | POWAI, MUMBAI |

| | |
|---------------------------|--|
| Project Name | MESCO EDUCATION SOCIETY |
| Clients | MESCO CHARITABLE TRUST |
| PROJECT HIGHLIGHTS | MODERN SCHOOL WITH AUDITORIUM, VOICE DATA IN CLASSROOMS ETC. |
| Architects | DESIGN ELEMENTS |
| Service Consultant | ELECTECH CONSULTANTS |
| Location | MUMBRA, THANE. |

| | |
|---------------------------|---|
| Project Name | ASTRIX COMFORT INN HINJEWADI |
| Clients | ASTRIX PROPERTIES PVT LTD,PUNE |
| PROJECT HIGHLIGHTS | 65 ROOMED STAR CATEGORY HOTEL WITH RESTAURANTS,BANQUET HALLS ETC. AREA OF DEVELOPMENT :-50000 SQ.FT |
| Architects | SANJAY PURI ARCHITECTS PVT. LTD. |
| Service Consultant | HYDROMECHANICAL CONSULTANTS PVT LTD. |
| Location | PUNE,MAHARASTRA |

| | |
|---------------------------|--|
| Project Name | AL-HAMID KALSEKAR HOSPITAL |
| Clients | KALSEKAR TRUST, MUMBAI CENTRAL, MUMBAI. |
| PROJECT HIGHLIGHTS | INTERNAL & EXTERNAL ELECTRIFICATION OF 100 BEDED MULTISPECIALTY HOSPITAL INCLUDING DESIGN, SUPPLY, INSTALLATION, TESTING AND COMMISSIONING OF 1000KVA, 22KV SUBSTATION WITH 100% GENERATOR BACKUP. |
| Architects | BHATNAGAR ASSOCIATES |
| Service Consultant | HYDROMECHANICAL CONSULTANTS PVT LTD. |
| Location | KAUSA, MUMBRA. |

| | |
|---------------------------|--|
| Project Name | FOUR POINT BY SHERATON |
| Clients Name | CHALET HOTELS PVT.LTD.(K. RAHEJA CORP.) |
| Scope of Work | COMPLETE INTERNAL & EXTERNAL ELECTRIFICATION OF FIRE ALARAM , NETWORKING& BMS SYSTEM 170 ROOMED STAR CATEGORY HOTEL WITH RESTAURENTS,BANQUET HALLS AND SWIMMING POOL AREA OF DEVLOPMENT 3.60LACS SQ.FT |
| Architects | SANJAY PURI ARCHITECTS PVT. LTD. |
| Service Consultant | DESIGN BUREAU CONSULTANTS PVT. LTD |
| Location | VASHI,NAVI MUMBAI |

| | |
|---------------------------|---------------------------------------|
| Project Name | JUPITER LIFELINE HOSPITAL |
| Clients Name | JUPITER LIFELINE HOSPITALS LTD,MUMBAI |
| Scope of Work | 200 BEDED MULTISPECIALTY HOSPITAL |
| Architects | SPATIAL DESIGNS CONSULTANTS PVT LTD |
| Service Consultant | ESKAYEM CONSULTANTS PVT LTD,MUMBAI |
| Location | THANE |

| | |
|---------------------------|---|
| Project Name | SATKAR RESIDENCY HOTEL |
| Clients Name | SHILPA CATERERS PVT LTD, THANE |
| Scope of Work | 65 ROOMED STAR CATEGORY HOTEL WITH RESTAURENTS,BANQET HALLS AND SWIMMING POOL. AREA OF DEVLOPMENT :-90000 SQ.FT |
| Architects | BHARAT SHETTY ARCHITECTS |
| Service Consultant | JOHN MECHEL CONSULTANTS PVT LTD |
| Location | THANE |

| | |
|---------------------------|---|
| Project Name | SENIOR CITIZEN'S RESORT |
| Clients Name | SIR MATHURDAS VISANJI TRUST |
| Scope of Work | STAR CATEGORY HERITAGE RESORT WITH 36 ROOMS,RESTAURENT & BANQET HALL.AREA OF DEVLOPMENT :-35000 SQ.FT |
| Architects | VMS ARHITECTS |
| Service Consultant | DESIGN BUREAU CONSULTANTS PVT LTD |
| Location | LONAVALA |

| | |
|---------------------------|---|
| Project Name | HOTEL SOUTH COAST |
| Clients Name | SAI FOODS PVT. LTD |
| Scope of Work | 3 STAR HOTEL WITH 17 ROOMS, RESTAURANT & BANQUET HALL / AREA OF DEVELOPMENT :-12000 SQ.FT |
| Architects | |
| Service Consultant | TRIMITI DESIGNS |
| Location | RABALE, NAVI MUMBAI |

| | |
|---------------------------|--|
| Project Name | HOTEL SUNCITY RESIDENCY |
| Clients Name | ROYAL SOJOURN HOTELS P.LTD. |
| Scope of Work | 40 ROOMED STAR CATEGORY HOTEL WITH RESTAURANT, BANQUET HALLS |
| Architects | BHARAT SHETTY ARCHITECTS |
| Service Consultant | DATAFLEX CONSULTANTS |
| Location | SEEPZ MIDC ANDHERI |

| | |
|---------------------------|--|
| Project Name | LOKHANDWALA FOUNDATION SCHOOL |
| Clients Name | LOKHANDWALA CONSTRUCTION, SANTACRUZ, MUMBAI. |
| Scope of Work | MODERN SCHOOL BUILDING WITH AUDITORIUM, CLASSROOM WITH VOICE DATA INTEGRATION. |
| Architects | HOSMAC ENGINEERING |
| Service Consultant | W.S ATKINS, BANGALORE. |
| Location | KANDIVALI, MUMBAI. |

| | |
|---------------------------|---|
| Project | LOTUS POND HOTEL (CURRENTLY KNOWN AS COUNTRY INN AND SUITS) |
| Clients | LOTUS POND HOTEL |
| PROJECT HIGHLIGHTS | 90 ROOMS, FINE DINE RESTAURANT, SWIMMING POOL, 3 NOS. BANQUET HALLS |
| Architects | BHARAT SHETTY & ASSOCIATES |
| Service Consultant | HYDROMECHANICAL CONSULTANTS PVT. LTD. |
| Location | MAHAPE , NAVI – MUMBAI |

| | |
|---------------------------|--|
| Project | PHEONIX PARK INN GOA |
| Clients | PHEONIX TOWNSHIP LIMITED |
| PROJECT HIGHLIGHTS | 20 ROOMED, STAR CATEGORY HOTEL WITH OUTDOOR RESTURANT & BARBEQUE. |
| Architects | |
| Service Consultant | HYDRO-MECHANICAL SERVICES |
| Location | SEQUERA VADO, CANDOLIUM, GOA |

**MAJOR PROJECTS EXECUTED
MULTIPLEXES**

| | |
|---------------------------|---|
| Project Name | ADLABS PACIFIC MATHURA |
| Clients | ADLABS FILMS LTD. |
| PROJECT HIGHLIGHTS | COMPLETE INTERNAL ELECTRIFICATION OF 3 SCREEN MULTIPLEX |
| Architects | ADLABS IN HOUSE ARCHITECTS |
| Service Consultant | CUTECH CONSULTING ENGINEERS PVT LTD. |
| Location | MATHURA |

| | |
|---------------------------|---|
| Project Name | ADLABS CRYSTAL RAJKOT |
| Clients | ADLABS FILMS LTD. |
| PROJECT HIGHLIGHTS | COMPLETE INTERNAL ELECTRIFICATION OF 3 SCREEN MULTIPLEX |
| Architects | ADLABS IN HOUSE ARCHITECTS |
| Service Consultant | CUTECH CONSULTING ENGINEERS PVT LTD. |
| Location | RAJKOT |

| | |
|---------------------------|---|
| Project Name | ADLABS SANGAM |
| Clients | ADLABS FILMS LTD. |
| PROJECT HIGHLIGHTS | COMPLETE INTERNAL ELECTRIFICATION OF 4 SCREEN MULTIPLEX |
| Architects | ERANA ARCHITECTS |
| Service Consultant | CUTECH CONSULTING ENGINEERS PVT LTD. |
| Location | ANDHERI,MUMBAI |

| | |
|---------------------------|--|
| Project Name | FAME SEVEN SEAS MULTIPLEX |
| Clients Name | FAME INDIA (I) LTD. |
| Scope of Work | COMPLETE INTERNAL ELECTRIFICATION OF 4 SCREEN MULTIPLEX WITH LOBBY, BOX OFFICE AND ADMIN BLOCK . |
| Architects | PRASHANT GORE ARCHITECTS. |
| Service Consultant | CUTECH CONSULTING ENGINEERS PVT LTD. |
| Location | VADODARA ,GUJARAT |

| | |
|---------------------------|--|
| Project Name | ADLABS IMAX , WADALA |
| Clients Name | ADLABS FILMS LTD. |
| Scope of Work | COMPLETE INTERNAL ELECTRIFICATION OF 4 SCREEN WITH 1 DOME THEATRE (REFURBISHMENT WORK) |
| Architects | ERANA ARCHITECTS |
| Service Consultant | CUTECH CONSULTING ENGINEERS PVT LTD |
| Location | WADALA,MUMBAI |

| | |
|---------------------------|--|
| Project Name | ADLABS MOVIESTAR MULTIPLEX |
| Clients Name | ADLABS FILMS LTD. |
| Scope of Work | COMPLETE INTERNAL OF 8 SCREEN MULTIPLEX (REFAB WORK) |
| Architects | ADLABS IN HOUSE ARCHITECTS |
| Service Consultant | - |
| Location | GOREGAON,MUMBAI |
| Completion Year | 2009 |

| | |
|---------------------------|--|
| Project Name | ADLABS ALANKAR |
| Clients Name | ADLABS FILMS LTD |
| Scope of Work | COMPLETE ELECTRIFICATION OF 1 SCREEN MULTIPLEX WITH 200 KVA , 11 KV SUBSTATION WORK/ AREA OF DEVELOPMENT:-10000 SQFT |
| Architects | JHAVERI & JHAVERI |
| Service Consultant | CUTECH CONSULTING ENGINEERS PVT LTD |
| Location | MUJAFAR NAGAR, U.P |
| Completion Year | 2008 |

| | |
|---------------------------|---------------------------------------|
| Project Name | ADLABS CINESTAR , JAIPUR |
| Clients Name | ADLABS FILMS LTD |
| Scope of Work | ELECTRIFICATION OF 5 SCREEN MULTIPLEX |
| Architects | |
| Service Consultant | |
| Location | JAIPUR |
| Completion Year | 2008 |

| | |
|---------------------------|---------------------------------------|
| Project Name | ADLABS GALAXY , JAIPUR |
| Clients Name | ADLABS FILMS LTD |
| Scope of Work | ELECTRIFICATION OF 4 SCREEN MULTIPLEX |
| Architects | |
| Service Consultant | |
| Location | JAIPUR |
| Completion Year | 2008 |

| | |
|---------------------------|--|
| Project Name | CINEPLEX ADLABS |
| Clients Name | ADLABS FILMS LTD |
| Scope of Work | COMPLETE ELECTRIFICATION OF 5 SCREEN MULTIPLEX AT MANGALORE AREA OF DEVELOPMENT:-55000 SQ FT |
| Architects | JHAVERI & JHAVERI ARCHITECTS |
| Service Consultant | CUTECH CONSULTING ENGINEERS PVT LTD |
| Location | MANGALORE |
| Completion Year | 2005 |

| | |
|---------------------------|---|
| Project Name | ADLABS JYOTI CHABIGRAH GUNA |
| Clients Name | ADLABS FILMS LTD |
| Scope of Work | COMPLETE ELECTRIFICATION OF 1 SCREEN MULTIPLEX WITH 400 KVA , 11KV SUBSTATION WORK/AREA OF DEVELOPMENT:-30000 SQ.FT |
| Architects | ADLABS IN HOUSE ARCHITECTS |
| Service Consultant | DESIGN CELL |
| Location | GUNA, INDORE,M.P |
| Completion Year | 2008 |

| | |
|---------------------------|--|
| Project Name | ADLABS LITTLE WORLD KARGHAR |
| Clients Name | ADLABS FILMS LTD |
| Scope of Work | COMPLETE ELECTRIFICATION OF 4 SCREEN MULTIPLEX AREA OF DEVELOPMENT:-55000 SQ.FT |
| Architects | JHAVERI & JHAVERI |
| Service Consultant | CUTECH CONSULTING ENGINEERS PVT LTD |
| Location | KHARGHAR, NAVI MUMBAI |
| Completion Year | 2007 |

| | |
|---------------------------|---|
| Project Name | ADLABS MULTIPLEX – SHIVPURI |
| Clients Name | ADLABS FILMS LTD |
| Scope of Work | COMPLETE ELECTRIFICATION OF 1 SCREEN MULTIPLEX WITH 400 KVA SUBSTATION WORK/ AREA OF DEVELOPMENT:-20000 SQ.FT |
| Architects | ADLABS IN HOUSE ARCHITECTS |
| Service Consultant | DESIGN |
| Location | SHIVPURI, INDORE, M.P |
| Completion Year | 2008 |

| | |
|---------------------------|--|
| Project Name | ODEON ADLABS DELHI |
| Clients Name | ADLABS FILMS LTD |
| Scope of Work | COMPLETE ELECTRIFICATION OF 3 SCREEN MULTIPLEX AREA OF DEVELOPMENT:-35000 SQ.FT |
| Architects | ADLABS IN HOUSE ARCHITECTS |
| Service Consultant | CUTECH CONSULTING ENGINEERS PVT LTD |
| Location | DELHI |
| Completion Year | 2008 |

| | |
|---------------------------|---|
| Project Name | ADLABS RAM LAXMAN WARANGAL |
| Clients Name | ADLABS FILMS LTD |
| Scope of Work | COMPLETE ELECTRIFICATION OF 1 SCREEN MULTIPLEX WITH 400 KVA SUBSTATION WORK / AREA OF DEVELOPMENT:- 55000 SQ.FT |
| Architects | ADLABS IN HOUSE ARCHITECTS |
| Service Consultant | DFX CONSULTANTS PVT LTD. |
| Location | WARANGAL , A.P |
| Completion Year | 2007 |

| | |
|---------------------------|--|
| Project Name | FAME FUN & SHOP MULTIPLEX , PUNE |
| Clients Name | FAME INDIA LTD. |
| Scope of Work | COMPLETE ELECTRIFICATION OF 3 SCREEN MULTIPLEX |
| Architects | ARCH.PARMAL METTA |
| Service Consultant | CUTECH CONSULTING ENGINEERS PVT LTD |
| Location | PUNE |
| Completion Year | 2008 |

| | |
|---------------------------|---|
| Project Name | FAME NEELYOG, |
| Clients Name | FAME INDIA LTD. |
| Scope of Work | COMPLETE HT 750 KVA SUB-STATION WORK :-AREA OF DEVLOPMENT :-40000 SQFT |
| Architects | |
| Service Consultant | CUTECH CONSULTING ENGINEERS PVT LTD |
| Location | GHATKOPAR |
| Completion Year | 2008 |

| | |
|---------------------------|--|
| Project Name | FAME SHALIMAR MULTIPLEX |
| Clients Name | FAME INDIA LTD. |
| Scope of Work | COMPLETE ELECTRIFICATION OF 3 SCREEN MULTIPLEX |
| Architects | ARCH.PARMAL METTA |
| Service Consultant | CUTECH CONSULTING ENGINEERS PVT LTD |
| Location | BHARUCH |

| | |
|---------------------------|---|
| Project Name | PALM BEACH ADLABS, VASHI |
| Clients Name | ADLABS FILMS LTD |
| Scope of Work | COMPLETE ELECTRIFICATION WITH LOBBY AREA OF 4SCREEN AREA OF DEVLOPMENT :-90000 SQ.FT |
| Architects | ERANA ARCHITECTS |
| Service Consultant | CUTECH CONSULTING ENGINEERS PVT LTD |
| Location | VASHI |
| Completion Year | 2007 |

MAJOR PROJECTS EXECUTED
COMMERCIAL COMPLEXES / IT / CORPORATE PARK

| | |
|---------------------------|------------------------------------|
| Project | NAMAN MIDTOWN (COMMERCIAL) |
| Clients | SHREE NAMAN DEVELOPERS PVT. LTD. |
| PROJECT HIGHLIGHTS | 22 STORYED COMMERCIAL COMPLEX |
| Architects | ACCESS ARCHITECTS |
| Service Consultant | ESKAYEM CONSULTANTS PVT.LTD. |
| Location | LOWER PAREL, MUMBAI. |
| Completion Year | 2015 |

| | |
|---------------------------|--|
| Project Name | GODREJ COLISEUM |
| Clients Name | GODREJ PROPERTIES LTD |
| Scope of Work | COMMERCIAL COMPLEX & CORPORATE PARK AT SION AREA OF DEVLOPMENT:-55000 SQ.FT |
| Architects | BORKAR & KAPDI ARCHITECTS |
| Service Consultant | N.G.SHROFF CONSULTANTS,MUMBAI |
| Location | SION |
| Completion Year | 2005 |

| | |
|---------------------------|---|
| Project Name | ADLABS FOOD COURT AT MAGNUM MALL, |
| Clients Name | ADLABS FILMS LTD |
| Scope of Work | COMPLETE ELECTRIFICATION OF MODERN FOOD COURT WITH 7 KITCHENS AREA OF DEVLOPMENT:-40000 SQFT |
| Architects | JHAVERI & JHAVERI |
| Service Consultant | CUTECH CONSULTING ENGINEERS PVT LTD |
| Location | MEERUT |
| Completion Year | 2008 |

| | |
|---------------------------|---|
| Project Name | ZENTA TECHNOLOGIES |
| Clients Name | M/S.ZENTA TECHNOLOGIES LTD |
| Scope of Work | 200 NODE DATA CENTRE WITH TRAINING CENTRE, RESTAURENT ETC. AREA OF DEVLOPMENT:-25000 SQFT. |
| Architects | TEAM ONE ARCHITECTS PVT LTD |
| Service Consultant | ENERSAVE CONSULTANTS PVT LTD |
| Location | MUMBAI |

| | |
|---------------------------|---|
| Project Name | BOMBAY HOUSE RELOCATION OF PANEL ROOM |
| Clients Name | TATA SONS LTD,MUMBAI |
| Scope of Work | ELECTRIFICATION OF BOMBAY HOUSE WITH RE-LOCATION OF LT ROOM WITH SUPPLY,TESTING & COMMISSIONING OF PANELS |
| Architects | |
| Service Consultant | TATA CONSULTING ENGINEERS |
| Location | MUMBAI |
| Completion Year | 1998 |

| | |
|---------------------------|---|
| Project Name | RESERVE BANK OF INDIA |
| Clients Name | RESERVE BANK OF INDIA,MUMBAI |
| Scope of Work | AC PLANT ELECTRIFICATION WITH SUPPLY,TESTING COMMISSIONING OF 2000a MAIN AC PANEL AND ALLIED WORKS. |
| Architects | |
| Service Consultant | |
| Location | MUMBAI |
| Completion Year | 2004 |

| | |
|---------------------------|---|
| Project Name | GERMAN CONSULATE GENERAL OFFICE |
| Clients Name | GERMAN CONSULATE INDIA |
| Scope of Work | COMPLETE ELECTRIFICATION & ALL SECURITY SYTEM, ACCESS CONTROL, FIRE ALRAM SYSTEM NETWORKS OF CORPORATE OFFICE AREA OF DEVLOPMENT:-10000 SQFT. |
| Architects | OS2 ARCHITECTS |
| Service Consultant | |
| Location | MUMBAI |
| Completion Year | 2008 |

| | |
|---------------------------|--------------------------------------|
| Project Name | GODREJ CASTLEMAINE |
| Clients Name | GODREJ PROPERTIES LTD |
| Scope of Work | COMMERCIAL COMPLEX & IT PARK AT PUNE |
| Architects | P.G.PATKI ARCHITECTS |
| Service Consultant | S.N.JOSHI CONSULTANTS ,PUNE |
| Location | PUNE |
| Completion Year | 2004 |

| | |
|---------------------------|--------------------------------------|
| Project Name | GODREJ ETERNIA |
| Clients Name | GODREJ PROPERTIES LTD |
| Scope of Work | COMMERCIAL COMPLEX & IT PARK AT PUNE |
| Architects | RATAN BOTLIBOY ARCHITECTS |
| Service Consultant | S.N.JOSHI CONSULTANTS PVT LTD |
| Location | PUNE |
| Completion Year | 2005 |

| | |
|---------------------------|---|
| Project Name | CORPORATE OFFICE FOR DHFL AT BKC |
| Clients Name | WADWAN HOLDINGS PVT.LTD |
| Scope of Work | COMPLETE ELECTRIFICATION OF MODERN CORPORATE OFFICE WITH ALL FACILITES / AREA OF DEVLOPMENT:- 25000 SQFT. |
| Architects | ARCH.MUSTAFA |
| Service Consultant | M/S.HYDRO MECHANICAL CONSULTANTS PVT LTD |
| Location | BKC, MUMBAI |
| Completion Year | 2007 |

| | |
|---------------------------|---|
| Project | RAHEJA XION |
| Clients | RAHEJA UNIVERSAL |
| PROJECT HIGHLIGHTS | 5 STOREY COMMERCIAL COMPLEX |
| Architects | J. P. PAREKH & SONS |
| Service Consultant | JOHN MECH-EL TECHNOLOGIES (I) PVT. LTD. |
| Location | BYCULLA, MUMBAI |

| | |
|---------------------------|--------------------------|
| Project | LOTUS IT PARK |
| Clients | LOTUS SPACES PVT. LTD. |
| PROJECT HIGHLIGHTS | IT PARK |
| Architects | VIVEK BOLE ARCHITECTS |
| Service Consultant | ELECTRO-MECH CONSULTANTS |
| Location | WAGLE ESTATE, THANE. |

| | |
|---------------------------|--|
| Project Name | ADOR IT PARK |
| Clients Name | TRION PROPERTIES PVT. LTD |
| Scope of Work | ELECTRICAL LOW SIDE CONTRACT FOR IT PARK, TRION PROPERTIES PVT.LTD.,PUNE |
| Architects | KAPADIA ASSOCIATES DESIGN LLP |
| Service Consultant | VISION ELECTRO MECHANICAL CONSULTANT PVT. LTD. |
| Location | VIMAN NAGAR,PUNE |
| Completion Year | 2016 |

| | |
|---------------------------|---|
| Project | ADLABS THEME PARK |
| Clients | ADLABS ENTERTAINMENT PVT. LTD. |
| PROJECT HIGHLIGHTS | ELECTRIFICATION WORK FOR THEME PARK AT KHOPOLI INCLUDING DESIGN , ERECTION ,TESTING OF 2500 KVA 22KVA SUBSTATION , INSTALLATION & EXECUTION OF ELECTRICAL WORKS OF ATTRACTIONS. |
| Architects | EDIFICE CONSULTANTS PVT. LTD. |
| Service Consultant | MEP CONSULTING ENGINEERS. |
| Location | KHOPOLI |
| Completion Year | 2016 |

MAJOR PROJECTS EXECUTED INDUSTRIAL

| | |
|---------------------------|--|
| Project | SHYBERG VALVES PVT LTD |
| Clients | SHYBERG VALVES PVT LTD |
| PROJECT HIGHLIGHTS | COMPLETE DESIGN & EXECUTION OF INTERNAL & EXTERNAL ELECTRIFICATION OF INDUSTRIAL HOUSE WITH FULL FLEDGED OFFICE BLDG,CANTEEN & WORKER QUARTRES ETC. AREA OF DEVLOPMENT:-4 LACS SQ.FT |
| Architects | BHOOMITI DESIGN CONSULANTS |
| Location | AHMEDABAD, GUJARAT |

| | |
|---------------------------|---|
| Project Name | STEEL STRONG VALVES PVT LTD,SANAND,AHMEDABAD |
| Clients Name | STEEL STRONG VALVES PVT LTD,MUMBAI. |
| Scope of Work | SUPPLY INSTALLATION,TESTING & COMMISSIONING OF 2NOS SUBSTATION 750KVA,11KV TRANSFORMER AND OTHER RELATED WORK FOR INDUSTRIAL HOUSE WITH FULL FLEDGED OFFICE BLDG,CANTEEN & WORKER QUARTRES ETC. AREA OF DEVLOPMENT:-4LACS SQFT. |
| Architects | BHOOMITI DESIGN CONSULTANTS |
| Service Consultant | |
| Location | AHMEDABAD,GUJARATH |
| Completion Year | 2009 |

| | |
|---------------------------|---|
| Project Name | UNITOP CHEMICALS LTD-RABALE UNIT |
| Clients Name | M/S.UNITOP CHEMICALS LTD |
| Scope of Work | ELECTRIFICATION OF CHEMICAL PLANT INCLUDING 22KV,315KVA SUBSTATION AND OTHER RELATED WORKS. |
| Architects | |
| Service Consultant | |
| Location | RABALE ,NAVI MUMBAI |
| Completion Year | 1998 |

| | |
|---------------------------|--|
| Project Name | MAHANAGAR GAS LTD |
| Clients Name | M/S.MAHANAGAR GAS LTD,MUMBAI |
| Scope of Work | ELECTRIFICATION OF CITIGATE STATION WITH SUPPLY,INSTALLATION OF 1250A MAIN PANEL AND OTHER WORK. |
| Architects | |
| Service Consultant | M/S.DALAL MOTT MCDONALD |
| Location | WADALA,MUMBAI |
| Completion Year | 2004 |

| | |
|---------------------------|--|
| Project Name | TACHE JEWELLERY |
| Clients Name | M/S.TACHE JEWELLERY PVT LTD,MUMBAI |
| Scope of Work | COMPLETE INTERNAL & EXTERNAL ELECTRIFICATION OF MODERN JEWELLERY PROCESSING UNIT AT SEEPZ ,MUMBAI. |
| Architects | TEAM ONE ARCHITECTS PVT LTD |
| Service Consultant | M/S.HYDRO MECHANICAL CONSULTANTS PVT LTD |
| Location | MUMBAI |
| Completion Year | 2004 |

| | |
|---------------------------|--|
| Project Name | BLUE DART WARE HOUSE AT BHIWANDI |
| Clients Name | BLUE DART EXPRESS LTD |
| Scope of Work | COMPLETE INTERNAL & EXTERNAL ELECTRIFICATION OF MODERN WAREHOUSE |
| Architects | SLICK ARCHITECHTS , MUMBAI |
| Service Consultant | SBR CONSULTANTS |
| Location | BHIWANDI |
| Completion Year | 2009 |

| | |
|---------------------------|--|
| Project Name | HENKEL CAC PVT. LTD. |
| Clients Name | HENKEL CAC PVT. LTD. |
| Scope of Work | COMPLETE INTERNAL & EXTERNAL ELECTRIFICATION OF PLANT III 22KV SUBSTATION INCLUDING TRANSFORMER & SHEHANKIT POWER TEMPLE,PANELS,CABLING ETC. |
| Architects | STRUCTWEL DESIGNERS & CONSULTANTS PVT. LTD. |
| Service Consultant | E & M CONSULTANTS PVT LTD. |
| Location | TURBHE, NAVI MUMBAI. |
| Completion Year | 2008 |

MAJOR PROJECTS EXECUTED RESIDENTIAL

| | |
|---------------------------|--|
| Project | MARATHON MONTE VISTA |
| Clients | CHHAGANLAL KHIMJI & CO. PVT. LTD. |
| PROJECT HIGHLIGHTS | 36 STORYED RESIDENTIAL TOWER COMPLETE WITH MIVAN SHUTTERING ENVIRONMENT, SWIMMING POOL, HEALTH SPA, CAR PARKING ETC. |
| Architects | DEEPAK MEHTA ARCHITECTS |
| Service Consultant | BASAVRAJ CONSULTANT |
| Location | MULUND (W), MUMBAI. |
| Completion Year | 2015 |

| | |
|---------------------------|--|
| Project Name | MARATHON NEXTGEN ERA |
| Clients Name | MARATHON NEXTGEN REALTY AND TEXTILES LTD. |
| Scope of Work | 4NOS, 35 STORYED RESIDENTIAL TOWERS COMPLETE WITH MIVAN SHUTTERING ENVIRONMENT.COMplete WITH SECURITY SYSTEM,ACCESS CONTROL,22KV SUBSTATION ETC. |
| Architects | ARCHITECT ABHOY SHAH |
| Service Consultant | BASAVRAJ ASSOCIATES, MUMBAI. |
| Location | LOWER PAREL, MUMBAI |
| Completion Year | 2009 |

| | |
|---------------------------|---|
| Project Name | PLANET GODREJ |
| Clients Name | GODREJ PROPERTIES LTD |
| Scope of Work | COMPLETE INTERNAL ELECTRIFICATION OF 2 NOS, 45 STOREY RESIDENTIAL TOWERS COMPLETE WITH MIVAN SHUTTERING ENVIRONMENT. AREA DONE:-2 LACS SQ.FT |
| Architects | J.P.PAREKH & SONS |
| Service Consultant | ESKAYEM CONSULTANTS PVT LTD |
| Location | BYCULLA,MUMBAI |
| Completion Year | 2009 |

| | |
|---------------------------|---|
| Project Name | DURGAMATA TOWERS |
| Clients Name | D.S. KULKARNI DEVELOPERS, PUNE. |
| Scope of Work | 32 STORIED RESIDENTIAL TOWER WITH SWIMMING POOL, CAR PARKING, AREA ETC. AT CUFF PARADE, MUMBAI. |
| Architects | F. T. KHAREGHAT & ASSOCIATES. |
| Service Consultant | DESIGN BUREAU CONSULTANTS PVT.LTD. |
| Location | CUFF PARADE, MUMBAI. |
| Completion Year | 2008 |

| | |
|---------------------------|---|
| Project Name | SYMPHONEY RESIDENTIAL COMPLEX |
| Clients Name | M/S.TATA HOUSING DEV CO.LTD |
| Scope of Work | INTERNAL & EXTERNAL ELECTRIFICATION OF 12 STOREY 4 TOWERS WITH SWIMMING POOL CLUB HOUSE ETC./ AREA OF DEVLOPMENT:-1.5Lacs SQFT. |
| Architects | SOMAYA & KALAPPA ARCHITECTS |
| Service Consultant | M/S.DESIGN BUREAU CONSULTANTS PVT LTD |
| Location | CHANDIVALI,MUMBAI |
| Completion Year | 2002 |

| | |
|---------------------------|---|
| Project Name | CIDCO SEAWOODS-NRI HOUSING COMPLEX |
| Clients Name | UNITY INFRA PROJECTS LTD, C/O CIDCO – NAVI MUMBAI |
| Scope of Work | INTERNAL & EXTERNAL ELECTRIFICATION OF 13 STOREY 5 TOWERS / AREA OF DEVLOPMENT:-2.5Lacs SQFT. |
| Architects | ARCHITECT HAFEEZ CONTRACTOR |
| Service Consultant | BAHULEKAR & ASSOCIATES,VASHI |
| Location | NAVI MUMBAI |
| Completion Year | 1996 |

| | |
|---------------------------|--|
| Project Name | AIRFORCE NAVAL HOUSING |
| Clients Name | M/S.HINDUSTAN CONSTRUCTION CO LTD |
| Scope of Work | INTERNAL & EXTERNAL ELECTRIFICATION OF 13 STOREYED 5 TOWERS/ AREA OF DEVLOPMENT:-1Lac SQFT. |
| Architects | C.P.KUKREJA & ASSOCITATES,NEW DELHI |
| Service Consultant | CONSULTING ENGINEERING SERVICES,DELHI |
| Location | KARGHAR,NAVI MUMBAI |
| Completion Year | 1998 |

| | |
|---------------------------|---|
| Project Name | SIDDACHAL HOUSING COMPLEX |
| Clients Name | M/S. KALPATARU GROUP |
| Scope of Work | INTERNAL & EXTERNAL ELECTRIFICATION OF 10 STOREY 4 TOWERS WITH SWIMMING POOL CLUB HOUSE ETC/ AREA OF DEVLOPMENT:-1,00,000 SQFT. |
| Architects | KRISHNA SHIRALI ARCHITECTS |
| Service Consultant | M/S.VOLTECH ELECTROMECHANICALS |
| Location | THANE |
| Completion Year | 2000 |

| | |
|---------------------------|--|
| Project Name | TANNA RESIDENCY |
| Clients Name | M/S.TANNA BUILDERS PVT LTD |
| Scope of Work | INTERNAL & EXTERNAL ELECTRIFICATION OF 35 STOREY TOWER WITH EXCLUSIVE DUPLEX & TRIPLEX FLATS./ AREA OF DEVLOPMENT:-1.5Lacs SQFT. |
| Architects | ACCESS ARCHITECTS, MUMBAI |
| Service Consultant | M/S.ESKAYEM CONSULTANTS PVT LTD. |
| Location | PRABHADEVI,MUMBAI |
| Completion Year | 2002 |

| | |
|---------------------------|--|
| Project Name | NEELKANTH HEIGHTS-MANSAROVAR |
| Clients Name | NEELKANTH GROUP |
| Scope of Work | INTERNAL & EXTERNAL ELECTRIFICATION OF 20 2TOREYED 2 TOWERS. / AREA OF DEVLOPMENT:-1Lac SQFT. |
| Architects | DEEPAK MEHTA ARCHITECTS |
| Service Consultant | M/S.SBR CONSULTANTS PVT LTD |
| Location | THANE |
| Completion Year | 2005 |

| | |
|------------------------|--|
| Project Name | EROS TOWER |
| Clients Name | HIRANANDANI CONSTRUCTION |
| Scope of Work | INTERNAL& EXTERNALELECTRIFICATION OF 10 STOREY TOWER AT THANE / AREA OF DEVLOPMENT: -30,000 SQFT. |
| Location | THANE |
| Completion Year | 2006 |

| | |
|---------------------------|--|
| Project | CRYSTAL PALACE BELAPUR |
| Clients | ENTIRE ESTATES PVT. LTD. |
| PROJECT HIGHLIGHTS | Sub-Station and External Electrification Work OfCrystal Palace. |
| Architects | ENCLOSURE BHAVIK K. SHAH ARCHITECTS |
| Service Consultant | HYDRO-MECHANICAL SERVICES |
| Location | CBD BELAPUR, NAVI MUMBAI |

| | |
|---------------------------|---|
| Project | LODHA CASA BELLA |
| Clients | LODHA DEVELOPERS |
| PROJECT HIGHLIGHTS | 18 STORYED 9 TOWERS RESIDENTIAL COMPLEX WITH ALL MODERN AMMENITIES. |
| Architects | KAPADIA ASSOCIATES |
| Service Consultant | WSP CONSULTANTS. |
| Location | DOMBIVLI, KALYAN, MAHARASHTRA |
| Year | 2015 |

| | |
|---------------------------|---|
| Project | LODHA CASA RIO |
| Clients | LODHA DEVELOPERS PVT. LTD. |
| PROJECT HIGHLIGHTS | 8 STOREY, 25 TOWERS RESIDENTIAL COMPLEX |
| Architects | RSP DESIGN CONSULTANTS PVT. LTD. |
| Service Consultant | WSP CONSULTANTS |
| Location | DOMBIVLI |
| Year | 2016 |

| | |
|---------------------------|-------------------------------|
| Project | ROSA BELLA |
| Clients | SAI ENTERPRISES |
| PROJECT HIGHLIGHTS | 29 STOREY RESIDENTIAL COMPLEX |
| Architects | ARCHETYPE CONSULTANTS |
| Service Consultant | ELECTRO-MECH CONSULTANTS |
| Location | GHODBUNDER ROAD, THANE (W) |
| Year | 2015 |

| | |
|---------------------------|---|
| Project | RAHEJA SERENITY |
| Clients | RAHEJA UNIVERSAL PVT. LTD. |
| PROJECT HIGHLIGHTS | 21 STOREY 3 TOWERS RESIDENTIAL COMPLEX WITH MIVAN ENVIRONMENT |
| Architects | RAHEJA UNIVERSAL PVT. LTD. |
| Service Consultant | JOHN MECH-EL CONSULTANTS |
| Location | KANDIVLI, MUMBAI. |
| Year | 2015 |

| | |
|---------------------------|---|
| Project | NAMAN BKC |
| Clients | SHREE NAMAN DEVELOPERS PVT. LTD. |
| PROJECT HIGHLIGHTS | ELECTRIFICATION WORK FOR NAMAN RESIDENTIAL PROJECT AT BKC |
| Architects | ACCESS ARCHITECT |
| Service Consultant | DESIGN BUREAU CONSULTANTS PVT. LTD. |
| Location | BANDRA MUMBAI |
| Year | 2015 |

| | |
|---------------------------|---|
| Project | CRESCENT TOWERS |
| Clients | SHAPOORJI PALLONJI & CO. LTD |
| PROJECT HIGHLIGHTS | 20 STOREY RESIDENTIAL TOWER COMPLETE WITH 2BHK,3BHK & DUPLEX TYPE FLATS, CAR PARK, CLUB HOUSE & SWIMMING POOL AT TARDEO, MUMBAI |
| Architects | F. T. KHAREGHAT & ASSOCIATES |
| Service Consultant | DESIGN BUREAU CONSULTANTS PVT. LTD |
| Location | TARDEO,MUMBAI |

| | |
|---------------------------|--|
| Project | REHAB BUILDING B3 & B6 |
| Clients | SD CORPORATION PVT.LTD |
| PROJECT HIGHLIGHTS | ELECTRICAL WORKS AT REHAB BUILDING B3 AT TARDEO |
| Architects | HAFEEZ CONTRACTOR |
| Service Consultant | CLANCY GLOBAL CONSULTING ENGINEERS |
| Location | TARDEO, MUMBAI |
| Project | ALPINE TOWER-1 |
| Clients | SD CORPORATION PVT. LTD. |
| PROJECT HIGHLIGHTS | ELECTRICAL WORKS FOR PROPOSED SALE TOWER-ALPINE-TOWER 1 AT SAMTA NAGAR, KANDIVALI-EAST. |
| Architects | RSP-DESIGN CONSULTANTS (INDIA) PVT.LTD. |
| Service Consultant | AECOM |
| Location | KANDIVALI, MUMBAI |
| Project | TIRUMALA HABITATS (RESIDENTIAL COMPLEX) |
| Clients | TRANSCON DEVELOPERS |
| PROJECT HIGHLIGHTS | SUPPLY INSTALLATION & TESTING OF 41 STOREY RESIDENTIAL TOWER WITH 3 PODIUMS FOR 3 WINGS. |
| Architects | REZA KABUL , BANDRA |
| Service Consultant | HYDRO-MECHANICAL CONSULTANT |
| Location | MULUND |
| Project | RUNWAL FOREST |
| Clients | WHEELABRATOR ALLOY CASTINGS LTD. |
| PROJECT HIGHLIGHTS | ELECTRICAL WORKS AT UPCOMING RESIDENTIAL TOWER AT BHANDUP |
| Architects | KAPADIA ASSOCIATES DESIGN LLP |
| Service Consultant | S N JOSHI CONSULTANTS PVT. LTD |
| Location | BHANDUP, MUMBAI |

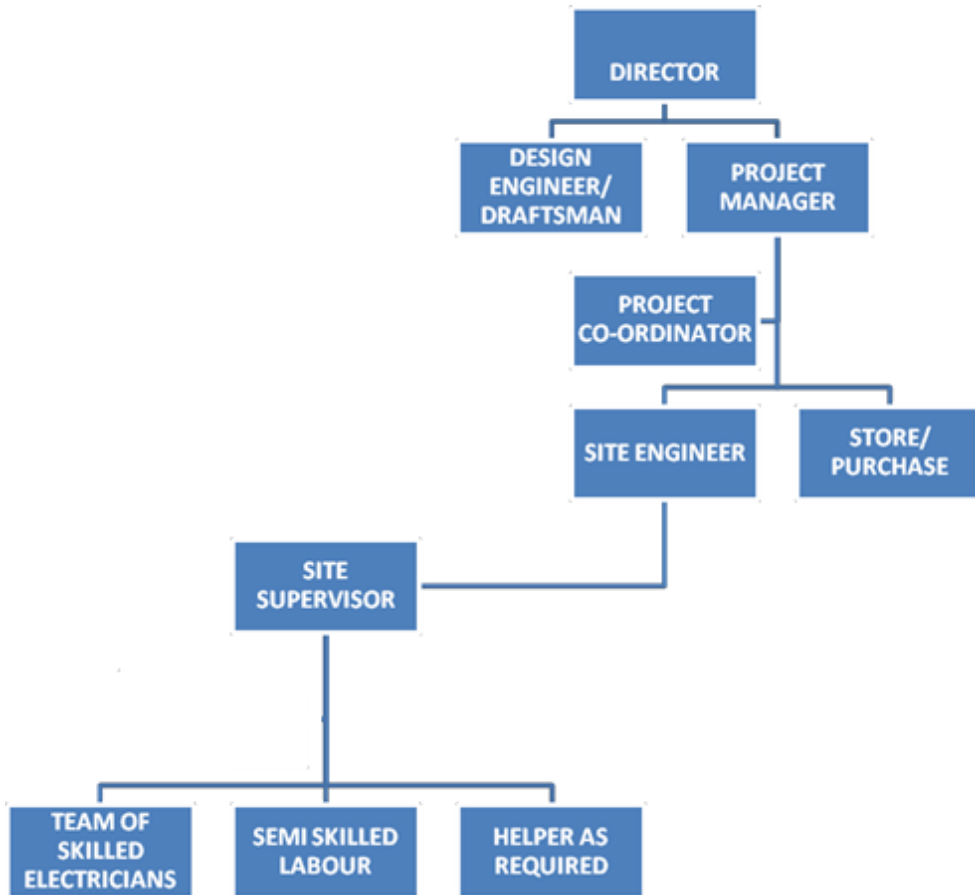
| | |
|---------------------------|---|
| Project | CARMICHAEL RESIDENCES (RESIDENTIAL) |
| Clients | R.A REALTY VENTURES |
| PROJECT HIGHLIGHTS | DG & IBMS WORK |
| Architects | IRANI ARCHITECTS |
| Service Consultant | AECOM |
| Location | PEDDAR ROAD , MUMBAI |

OUR ORGANISATION STRENGTH

WORK FORCE

| | |
|---|---------|
| MANAGEMENT | 5 Nos |
| MID-MANAGEMENT | 45 Nos |
| SITE PERSONNELS (As PER THE SITE REQUIREMENTS LABOURS ON CONTRACTUAL BASIS CAN BE ARRANGED AS AND WHEN REQUIRED) | 150 Nos |

ORGANISATION STRUCTURE FOR INDIVIDUAL SITE



LIST OF TOOLS & TACKLES

| | |
|--|------------|
| Welding Machine, Welding Cables & Accessories | : 5 sets |
| Drilling Machine | : 25 Nos. |
| Drilling Machine 1/1” | : 10 Nos. |
| Commander Drilling Machine | : 3 Nos. |
| Hole saw cutter of all sizes | : 5 sets |
| Electric Blower | : 10 Nos |
| Disc Grinders | : 3Nos |
| Jig Saw | : 2 Nos |
| Shearing Machine | : 5 Nos |
| Conduit Bench Vice | : 10 Nos |
| Table Bench Vice | : 5 Nos |
| Gas Cutting sets with all accessories | : 1 set |
| Hydraulic crimping machine tools with dies upto 400 sq.mm. | : 3 set |
| Hand crimping tools | : 7 sets |
| Ring Spanner Sets | : 15 sets |
| Flat spanner sets | : 20 sets |
| Pipe wrench 24” | : 2 Nos. |
| Cable Jacks & spindle | : 3 Set |
| Tools for Excavation | : 20 Sets |
| Aluminium Ladders | : 20 Nos |
| Wooden Ladders | : 100 Nos |
| Safety Belts | : 150 sets |
| Portable fire extinguisher(2kg/5kg) | : 5 Nos |
| Hand Gloves 11/33/66 KV | : 50 Pairs |

TESTING EQUIPMENTS :

| | |
|-------------------------------|---------|
| 5 KV Megger | : 1 No |
| 1000 Volt Megger | : 2 Nos |
| 500 Volt Megger | : 3 Nos |
| Multimeter (Digital) | : 4 Nos |
| Tong Tester | : 4 Nos |
| Earth Tester with accessories | : 3 Nos |
| Voltmeter 0-600 volts | : 5 Nos |
| Ammeter 0-60 Amp | : 6 Nos |
| Digital Load Analyser | : 1 No |
| Lumen meter | : 1No. |

MANUFACTURING DIVN.



ABOUT US

From a Spring to the Major River: (The beginning)

We are one of the Leading manufacturers and Exporters of LT Electrical Panels, Bus ducts, Rising Mains, etc. We are a professionally managed company and have established full-fledged manufacturing facility for the manufacture of LT Electrical panels, Bus ducts, Control Panels, etc.

With a humble beginning in the year 1995 at Mumbai, manufacturing distribution boards, catering to SSI industries and OEM in the immediate vicinity with indigenously developed manufacturing equipment's.

Now a full-fledged set up with most modern equipment's and manufacturing process, spread over more than 6000 Sq.ft housed in multi stored structure housing state of the art fabrication set up with CNC Press Brake & CNC shearing facility at industrial set up in MIDC Electronic Zone, Mahape-Navi Mumbai.

All our product designs are backed by many years of experience in the field and engineered based on the extensive feedback from the site condition and maintenance procedure adopted by the industries. This has enabled us to offer our products engineered to combine UTILITY, QUALITY & ECONOMY.

IN - HOUSE PROCESS

DESIGN:

- We specialize in designing custom-built modules.
- Great emphasis on easy maintenance.
- Standardization is a continuous process for effective and efficient delivery.
- Exhaustive site requirements study is done before designing.
- Panels are designed taking into consideration the environmental factors like ambient temperatures, dust, moisture, indoor & outdoor applications, etc.
- Selections of Busbar, Busbar support, structure, etc. are based on system fault levels (KA).
- Panels are designed and manufactured in modular sections; keeping in view of easy transportation, handling and installation at site.
- Great emphasis on Utility, Quality and Economy through value engineering.

FABRICATION AND PAINTING:

- Panels are fabricated using Branded Panel Grade CRCA sheet of having thickness 1.6 mm, 2mm and 3mm.
- Sheets are processed for shearing and bending through Semi CNC, Hydraulic machines.
- Tools, dies and fixtures are used extensively to get good quality knock outs and holes (punched).
- Major welding work is done through Argon Welding Machine.
- All metal surfaces undergo pre – treatment through 7 Tank Process prior to the powder coating for enhancing the aesthetic look and durability.
- Standard paint shade like Siemens grey RAL (7032) is used. Customized shades could be provided as per the requirement.

ASSEMBLY

- Individual feeders are supplied with concealed hinges, neoprene rubber gaskets, aluminum anodized and laser engraved labels for external and printed stickers for internal components identification
- Outgoing & Incoming cables are terminated on terminal blocks or links and not directly on switchgear
- Independent cable alleys and bus bar chambers are provided with adequate FRP shrouding for safety and maintenance.
- Base frame of ISMC 75 or ISMC 100 is provided for rigid foundation.
- PVC channels, cable ties, etc. are used extensively for easy maintenance.

BUS BARS

- Horizontal Bus Bars with FRP supports for main power distribution at the top or bottom are of uniform cross section throughout the length of the panel.
- Vertical bus bar extends into each section to supply power to each individual section.
- Bus bars are fabricated from high conductivity aluminium alloy or electrical grade copper.
- Colour coded bands are provided on bus bars for providing phase identification in line with requirements as per IS 375.
- Bimetallic plates are provided wherever there are joints between Aluminium & Copper.
- Aluminium or Copper Earth Bus is provided at top / bottom / center throughout the length of the panel.

QUALITY POLICY

- Dedicated engineering team monitors the quality of the panel boards from the fabrication stage till the dispatch.
- Two step approach for Stringent raw material quality is maintained by purchase of reputed make genuine quality material and acceptance of the material with test / calibration certificates at the time of inward e.g. MS CRCA Sheet from TATA steelium.
- The busbar materials used are of electrolytic grade with sample tested for purity grade. All hardware used are hardened & yellow passivated.
- Switchgear and control gear are brought from reputed major international market leaders e.g., SCHNEIDER ELECTRIC Co.,SIEMENS, ABB, L&T, LEGRAND etc.
- Each assembled Panel Boards are visually inspected with respect to component layout & dimension as per the drawings, Mechanical & Electrical operation of the switchgear are tested.
- The assembly is tested for routine in-house factory test with 6KV HV tester at 2.5KV for 60 seconds, tested prior and later with insulation tester using 1000V Megger.

TESTING FACILITY

- The Panel boards are Tested with an HV Tester at 2.5KV for 60 seconds
- Insulation resistance test using 1000V Megger
- Primary Injection Kit for testing the protective devices & Measuring Instruments as per client's requirement.
- Resistive load for Single & Three Phase testing at 5KW & 30KW respectively.
- Operation tests conducted on all the panels with 3Phase supply.

Type Test Certification:

The LT Panels –PCC & MCC are type tested at CPRI Bhopal for SHORT CIRCUIT Withstand capacity for 50KA rms & 105KA peak of 1 Sec. and also for HEAT RUN Test, Busduct & Feeder Pillar are type tested for IP 55, outdoor installation.

Third Party Inspection:

We also arrange for Third Party Inspection / Certification of all our product manufactured as requested by the client as an additional service at nominal charges.

Quality Certification:

We are certified with ISO 9001:2008 accreditation from BM TRADA Certification Pvt. Ltd. agency.

FEW LAND MARKS

- In the year 1995, re-designed, manufactured, and installed 3200A PCC Panel of 10 meters in length for a Multinational bulk Chemical Mfg Industries' Indian division at Ambernath MIDC
- Designed and manufactured 5000A Capacity PCC Panel for M/s Mega Mall at Mumbai.
- Designed manufactured and installed 4000A Capacity PCC Panel with 3Nos. Transformer and DG Incomer with 3 Nos. ASCO make Auto changeover system along with complete interlocking for providing unmanned changeover from normal supply Source to Emergency supply and reverse on resumption of Power Supply for one of the biggest mall in Nashik City. Metering panel with more than 300 KWH meters hooked up to BMS system.
- Designed and manufactured 3200A Capacity PCC Panel of 13 meters in length in record time of three week, for M/s Godrej Properties Ltd. for one of their prestigious first commercial project at Pune.
- Designed and manufactured 2000A Capacity PCC Panel with complete PLC base logic control to enable Turbine cooling system of Power Generating Plant at Khopoli for M/s TATA Electric Co.
- Executed with complete redesigning, manufacturing, installation & commissioning of the new Main PCC Panel to replace the existing panel installed approx. 30years ago at M/s Nehru Center –Worli Mumbai.
- Executed the challenging work for OBEROI TOWERS (now TRIDENT HOTEL) of replacing all the floor panels with redesigned new panels with double capacity in the existing available floor space. We have completed the work with Minimum Outage without affecting the hotel operations.

OUR CAPABILITIES

- Experienced technical team to economize customer requirement through innovative design combining Utility & Quality to aesthetically merge into their expected interior design theme.
- The designs are developed using latest version of design software –AutoCAD.
- Engineering team for site survey to assess the design & specific electrical requirements of the client.
- We provide dedicated team to take up complete work of supplied panels at site for Installation, Testing & Commissioning.
- We offer the most competitive pricing through indigenous design techniques.
- We provide Panels Type Tested at CPRI Bhopal to withstand short-circuit fault current of 50KA for 1 second.
- Innovation being a continuous process, we **AIM** ensure to achieve new heights by incorporating latest development in the electrical switchgear products.

PRODUCT RANGE

- POWER CONTROL CENTRE (P C C).
- MOTOR CONTROL CENTRE (M C C)
- ANNUNCIATOR PANELS.
- AUTOMATIC POWER FACTOR CORRECTION PANELS.
- PLC LOGIC BASED PROCESS CONTROL PANELS.
- METERING & MONITORING SOLUTION SYSTEM PANELS.
- AUTO MAINS FAILURE PANELS
- AUTO SOURCE CHANGEOVER SYSTEM PANELS.
- ENGINE CONTROL PANELS
- POWER & LIGHTING DISTRIBUTION BOARDS
- RISING MAIN / BUSDUCT –INDOOR / OUTDOOR.
- FEEDERS PILLARS –INDOOR / OUTDOOR.
- PUSH BUTTON CONTROL DESK.

MAJOR CLIENTELES

- M/S SUNJANA DEVELOPERS
- M/S TACHE JEWELLERY PVT LTD.
- M/S.ADLABS FILMS LTD.
- M/S.NASIK CITY CENTRE MALL PVT LTD
- M/S.NEELYOG DEVELOPERS PVT LTD.
- M/S.ASTRIX PROPERTIES PVT LTD
- M/S.SAROVAR HOTELS
- M/S.STEEL STRONG VALVES PVT LTD
- M/S.JUPITOR LIFE LINE HOSPITALS LTD
- M/S.INSTITUTE OF TECHNOLOGY & MANAGEMENT (ITM KARGHAR,NAVI MUMBAI)
- M/S.AVENUE SUPERMARKETS PVT LTD (DMART)
- M/S.GOLANI BROTHERS.
- M/S.TATA ELECTRIC CO
- M/S. TATA PROJECTS LTD
- M/S GODREJ PROPERTIES LTD
- M/S GODREJ & BOYCE LTD
- M/S GODREJ MEMORIAL TRUST
- M/S NIRMAL GROUP
- M/S EAST INDIA HOTELS LTD (TRIDENT TOWER)
- M/S MAHANAGAR GAS LTD
- M/S HUMBOLDT WEDAG INDIA LTD
- M/S HCC LTD
- M/S TATA HOUSING DEV.CO LTD
- M/S.RESERVE BANK OF INDIA

MAJOR PROJECTS EXECUTED

| | |
|----------------------|---|
| Project Name | SARDA CITY CENTRE MALL |
| Clients Name | M/S.NASIK CITY CENTRE MALL PVT LTD |
| Scope of Work | 4000A Main LT Panel with Incomer from 3 Transformers and Synchronized DG with 3Nos ASCO ATS interlocking, PDB Panels, AHU panels and floor metering panels. |
| Location | NASIK |

| | |
|----------------------|---|
| Project Name | JUPITER LIFE LINE HOSPITAL |
| Clients Name | M/S.JUPITER LIFE LINE HOSPITALS LIMITED |
| Scope of Work | 2500A Main LT Panel and other control panels. |
| Location | NASIK |

| | |
|----------------------|--|
| Project Name | GODREJ CASTLEMINE" COMMERCIAL COMPLEX |
| Clients Name | M/S.GODREJ PROPERTIES & INVESTMENTS LTD. |
| Scope of Work | 3200A Main LT Panel, Capacitor Panel & Other panels. |
| Location | PUNE. |

| | |
|----------------------|---|
| Project Name | LAKE CITY MALL |
| Clients Name | M/S.GODREJ PROPERTIES & INVESTMENTS LTD. |
| Scope of Work | 3200A Main LT Panel, Metering Panels And Other Control Panels |
| Location | THANE , MUMBAI |

| | |
|----------------------|---|
| Project Name | ADLABS MULTI SCREEN ALL OVER INDIA 40 SCREEN |
| Clients Name | M/S.ADLABS FILMS LTD. |
| Scope of Work | 1000A PCC Panels, PDB's etc as per requirement |
| Location | ALL OVER INDIA |

| | |
|----------------------|--|
| Project Name | ATRIA SHOPPING MALL |
| Clients Name | M/S.SIDDHI PROPERTIES PVT. LTD. |
| Scope of Work | 2000A Main LT Panel, Capacitor Panel & PDB panels. |
| Location | WORLI , MUMBAI |

| | |
|----------------------|---|
| Project Name | VASUDHA CHEMICALS PVT. LTD. |
| Clients Name | M/S. Vasudha Chemicals Pvt. Ltd |
| Scope of Work | 1000A Main MV Panel, Motor control centre, Power control centre & Supply of all the lighting & Power Distribution boards. |
| Location | MUMBAI |

| | |
|----------------------|---|
| Project Name | S' Park (IT Park) |
| Clients Name | M/S.AKRUTI SMC JOINT VENTURE |
| Scope of Work | 2500A Main LT Panel with Incomer from 2 Transformers and Synchronized DG with 2Nos ASCO ATS interlocking, PDB Panels and AHU panels |
| Location | THANE , MUMBAI |

| | |
|----------------------|--|
| Project Name | TACHE JEWELLARY PVT. LTD. ANDHERI. |
| Clients Name | M/S.TACHE JEWELLARY PVT. LTD. |
| Scope of Work | 1200A Main LT Panel, Capacitor Panel & Other panels. |
| Location | ANDHERI, MUMBAI |

| | |
|----------------------|--|
| Project Name | MEGA MALL |
| Clients Name | M/S.'M' SQUARE MALL MKT. AND MANG. & M/S. ALFA DEAL |
| Scope of Work | 5000A PCC and other MPDB's |
| Location | ANDHERI, MUMBAI |

| | |
|----------------------|--|
| Project Name | NEELYOG CINEPLAZA SHOPPING MALL |
| lients Name | M/S.NEELYOG DEVELOPERS |
| Scope of Work | 3200A PDB Panel and other PDB Panels |
| Location | GHATKOPAR , MUMBAI |

| | |
|----------------------|---|
| Project Name | STEEL STRONG VALVES PVT LTD, SANAND GUJARATH PROJECT |
| Clients Name | M/S.STEEL STRONG VALVES PVT LTD, MUMBAI |
| Scope of Work | 1000A Main LT Panel, APFC Panel and other PDB's & LDB's |
| Location | GUJRAT |

| | |
|----------------------|---|
| Project Name | "GODREJ ETERNIA" COMMERCIAL COMPLEX. |
| Clients Name | M/S.GODREJ PROPERTIES & INVESTMENTS LTD. |
| Scope of Work | 2500A Main LT Panel, Capacitor Panel & Other panels at Pune |
| Location | PUNE , MAHARASHTRA |

| | |
|----------------------|-----------------------------------|
| Project Name | JPMC |
| Clients Name | M/S.NIKHIL COMFORTS |
| Scope of Work | 2500A AC Panel & Other MCC Panels |
| Location | MALAD , MUMBAI |

| | |
|----------------------|--|
| Project Name | D ' MART MALL |
| Clients Name | M/S. AVENUE SUPERMARTS PVT. LTD. |
| Scope of Work | 1000A PCC and other PDB's |
| Location | PEN, PANVEL, SANGLI, SOLAPUR & MANGALPUR |

| | |
|----------------------|--|
| Project Name | RENOVATION OF OBEROI HOTELS |
| Clients Name | M/S.EAST INDIA HOTELS LTD. |
| Scope of Work | Renovation / Relocation of Electrical Distribution System including Design, manufacturing & Supply of all the Power Distribution Boards. |
| Location | NARIMAN POINT , MUMBAI |

| | |
|----------------------|---|
| Project Name | OBEROI HOTELS - MAIN KITCHEN |
| Clients Name | M/S.EAST INDIA HOTELS LTD. |
| Scope of Work | Renovation / Relocation of Electrical Distribution System including Design, manufacturing & Supply of all the Lighting & Power Distribution Boards. |
| Location | NARIMAN POINT , MUMBAI |

| | |
|----------------------|---------------------------------------|
| Project Name | SATKAR RESIDENCY HOTEL, |
| Clients Name | M/S. SHILPA CATERERS PVT. LTD. |
| Scope of Work | 1600A Main LT Panel, & PDB's Panels |
| Location | THANE, MUMBAI |

| | |
|----------------------|--|
| Project Name | LINK SQUARE MALL |
| Clients Name | M/S. ZEARS DEVELOPERS |
| Scope of Work | PCC Panel, Auto Changeover Panel, Capacitor Panel. |
| Location | BANDRA, MUMBAI |

| | | |
|----------------------|---|--|
| Project Name | MAHANAGAR GAS LTD. - CNG GAS STATION | |
| Clients Name | M/S. MAHANAGAR GAS LTD. MUMBAI. | |
| Scope of Work | 1200A Main LT Panel, & PDB's at CNG Gas Station, | |
| Location | SION, MUMBAI | |
| Project Name | CENTRAL FOOD & DRUG | |
| Clients Name | M/S. GOLANI BROTHERS | |
| Scope of Work | 1250A PCC and other PDB's and APFC Panels | |
| Location | SION, MUMBAI | |
| Project Name | BOMBAY HOUSE - RELOCATION OF ELECTRICAL SYSTEM. | |
| Clients Name | M/S. TATA SERVICES LTD. | |
| Scope of Work | Metering panel, Power & Lighting Distribution Boards | |
| Location | MUMBAI | |
| Project Name | RESERVE BANK OF INDIA, MAIN BUILDING | |
| Clients Name | M/S.RBI, MUMBAI | |
| Scope of Work | 2000A Main LT Panel | |
| Location | MUMBAI | |
| Project Name | GODREJ HOSPITAL | |
| Clients Name | M/S.GODREJ MEMORIAL TRUST | |
| Scope Of Work | 2000A MAIN LT PANEL, CAPACITOR PANEL & OTHER PANELS AT MUMBAI. | |
| Location | VIKHROLI | |
| Project Name | "CIDCO SEAWOODS" HOUSING COMPLEX FOR NRI'S | |
| Clients Name | M/S. Unity Infraprojects Ltd. | |
| Scope of Work | 800A Main Metering panel for NRI Housing Complex | |
| Location | SEAWOODS , NAVI MUMBAI | |
| Project Name | JALGAON MUNICIPAL TOWER, | |
| Clients Name | M/S.GOLANI BROS. | |
| Scope of Work | 1600A Main MV Panel, Capacitor panel, Power & Lighting Power Distribution Boards. | |
| Location | JALGAON | |
| Project Name | PHOENIX PARK-INN RESORT | |
| Clients Name | M/S.PHOENIX TOWNSHIP | |
| Scope of Work | 1000A PCC AND OTHER PDB'S | |
| Location | GOA | |
| Project Name | "AMERICAN ION" RESEARCH CENTRE | |
| Clients Name | M/S.GODREJ & BOYCE LTD. | |
| Scope of Work | 1250A MAIN LT PANEL, CAPACITOR PANEL & OTHER PANELS AT MUMBAI | |
| Location | MUMBAI | |



| | |
|----------------------|---|
| Project Name | UNITOP CHEMICALS LTD. |
| Clients Name | M/S. UNITOP CHEMICALS LTD. |
| Scope of Work | 1000A MAIN MV PANEL, MOTOR CONTROL CENTRE, POWER CONTROL CENTRE & SUPPLY OF ALL THE LIGHTING & POWER DISTRIBUTION BOARDS. |
| Location | MUMBAI |

| | |
|----------------------|--|
| Project Name | IDEA CELLULAR |
| Clients Name | M/S.SANKALPAN INFRASTRUCTURE |
| Scope of Work | PCC PANEL, AUTO CHANGEOVER PANEL, CAPACITOR PANEL. |
| Location | |

| | |
|----------------------|-------------------------------------|
| Project Name | PERPUTO MANAGEMENT |
| Clients Name | M/S. TURNKEY ELECTRICALS PVT. LTD. |
| Scope of Work | 800A PDB Panel and other PDB panels |
| Location | MALAD , MUMBAI |

| | |
|----------------------|--|
| Project Name | "GEOMETRIC SOFTWARE" IT COMPANY |
| Clients Name | M/S.Godrej & Boyce Ltd. |
| Scope of Work | 2000A Main LT Panel, Capacitor Panel & Other panels at Mumbai. |
| Location | MUMBAI |

| | |
|----------------------|--|
| Project Name | "WNS" IT COMPANY |
| Clients Name | M/S.GODREJ & BOYCE LTD. |
| Scope of Work | 2000A MAIN LT PANEL, CAPACITOR PANEL & OTHER PANELS AT MUMBAI. |
| Location | MUMBAI |

| | |
|----------------------|--|
| Project Name | STEEL MILL PROJECT |
| Clients Name | M/S. TECHNOTHERMA FURNANCE (I) PVT. LTD. |
| Scope of Work | FURNACE CONTROL PANEL |
| Location | SUDAN |

| | |
|----------------------|---|
| Project Name | TATA ELECTRIC CO. - KHOPOLI GENERATION STATION |
| Clients Name | M/S.TATA ELECTRIC CO. |
| Scope of Work | 2000A MOTOR CONTROL CENTRE WITH PLC LOGIC PANEL AT KHOPLOI GENERATION STATION |
| Location | KHOPOLI. |

LIST OF MACHINARIES, **TOOLS & TACKLES**

NAME OF TOOLS

| | |
|--|----------|
| Semi CNC Press brake YSD 70 ton | : 1 No |
| Semi CNC shearing Machine YSD 6mm cutting capacity | : 1 No |
| Arc Welding Machine Big | : 2Nos |
| Arc Welding Machine small | : 2Nos |
| Heavy Duty Fly press | : 2 Nos |
| Spot Welding Machine | : 1 No. |
| Shearing Press Manual | : 2 Nos. |
| Cutting Machine | : 2 Nos |
| Hydraulic Busbar Bending Machine | : 2 Nos |
| Grinding Machine | : 4 Nos |
| Drilling Machines | : 4 Nos. |
| Japson High Speed Cutting Machine | : 2 Nos. |
| Hydraulic Fork Lift | : 1 No |
| Tower Crane for loading | : 1 No |
| 5 KV Megger | : 1 No. |
| 1000 V Megger | : 2 Nos. |
| 500 Volt Megger | : 3 Nos |
| Multimeter (Digital) | : 4 Nos |
| Tongtester | ; 4 Nos |
| Earth Tester with accessories | : 3 Nos |

TESTIMONIALS



To Whomsoever It May Concern.

This is to certify that **M/s. Prabhat Powertech Pvt. Ltd.** have successfully completed the electrification work of our **LOTUS IT PARK** at Plot no - B18/19, Wagle Industrial Estate, Road No 16 Thane , Mumbai consisting of Commercial - IT PARK WITH MODERN AMMENETIES .

The project has been satisfactorily executed in a professional manner with good team of engineers and technicians in accordance with our stringent quality standards. We wish them every success in their future projects.

For **Lotus Spaces Private Limited**

Authorize Signatory

Place: - Mumbai

Date:- 17.08.2012

LOTUS SPACES PRIVATE LIMITED

(formerly known as Precious Real Estate Pvt. Ltd.)

Regd. Office : 26/A, Tex Centre, L-Wing, 3rd Floor, Next to HDFC Bank, Chandivali Road, Andheri (E), Mumbai - 400 072, India.
Tel: +91 - 22 - 42009274, 42009100 Fax : 91 - 22 - 28478508 Website: www.lotusgroup.in



THE ASSOCIATED BUILDING COMPANY LIMITED

REGISTERED OFFICE: BOMBAY HOUSE, 24 HOMI MODY STREET, MUMBAI 400 001.
TELEPHONE: 2049131
FAX: 91-22-288 5762

14 January, 2000

TO WHOMSOEVER IT MAY CONCERN

This is to certify that M/s. Prabhat Powertech Private Limited has supplied power distribution boards to our Bombay House for floor wise relocation of BEST supply. These Panel boards were to be made and installed as per the available place. M/s. Prabhat Powertech Pvt. Ltd., has executed the project satisfactorily under the joint supervision of Tata Consulting Engineers, Carnac and Tata Projects Limited, Bombay. The Panel boards manufactured and supplied as per the quality standards of Tata Projects Limited/Tata Consulting Engineers are working satisfactorily at Bombay House.

The Associated Building Co. Ltd.

P. K. Commissariat

(P. K. Commissariat)
Manager Maintenance



NARIMAN POINT
MUMBAI-400 021, INDIA
TELEPHONE: 91-22-232 4343
FACSIMILE: 91-22-204 3282
E-MAIL: reservations@oberoi-mumbai-com
WEBSITE: www.oberoihotels.com

06.02.2003

TO WHOMSOEVER IT MAY CONCERN

This is to certify that M/s. Prabhat Powertech Pvt. Ltd., has successfully completed the project of refurbishment of our LT electrical sub-distribution system at 'Oberoi Hotels, Mumbai', Nariman Point, Mumbai.

The Project involved designing, supply, erection, testing and commissioning of LT sub-distribution panel boards and other related jobs.

The job executed by Prabhat Powertech was well within the stipulated time and the total value of the job was Approx. 29 Lacs.

We wish them all success in their future projects.

For OBEROI HOTELS, MUMBAI

VIKRAM CHOUBAL
CHIEF ENGINEER



**JAYANT TIPNIS
CONSULTANTS
PRIVATE LIMITED**

CITY PLANNERS - ARCHITECTS - ENGINEERS - VALUERS - SURVEYORS
INTERIOR DESIGNERS - PROJECT MANAGEMENT CONSULTANTS
SADGURU DARSHAN, 1050, NEW PRABHADEVI ROAD, MUMBAI - 400 025
TEL : (91-022) 460 2505 / 2506 / 430 0280 / 430 0459 / 422 8753
FAX : (91-022) 460 2507 • E-mail : jtcpl@bom3.vsnl.net.in

Ref. No. PC 27(A)-199

Date: October 4, 2002.

CERTIFICATE


TO WHOMSOEVER IT MAY CONCERN

This is to state that M/s. Prabhat Powertech Pvt. Ltd., having their Office at 124, Ashok Service Indl. Estate, Near Sangrliia Biscuit, L.B.S. Marg, Bhandup (W), Mumbai - 400 078 are registered in the Panel of Electrical Contractors of our Organisation with immediate effect. They have very good experience in this field. We recommend them for undertaking Electrical Work of any magnitude for satisfactory completion.

We wish them a bright future,

We certify,

For JAYANT TIPNIS CONSULTANTS PVT. LTD.


Ar. J.C. TIPNIS.

Mg. Director & Architect-in-Chief.

Regn. No. CA/75/1813 of COA, New Delhi.

27A-198.SG.MP

Tata Housing Development Co. Ltd.



Regd. Office : Emerald Court, 704, Lady Jamshedji Road,
Mahim (W), Mumbai - 400 016, India
Tel: 91-22-447 2784/447 2794, Fax: 91-22-447 2679 E-mail: info@tatahousing.com

Date: 29.10.2001

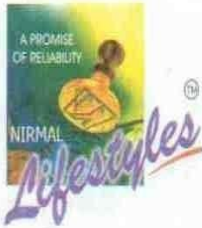
TO WHOMSOEVER IT MAY CONCERN

This is to certify that M/s. Prabhat Powertech Pvt. Ltd. have successfully completed the electrical work of our Residential Project 'Symphony' at Chandivili, Mumbai consisting of 192, flats and club house with swimming pool. The value of the work is Rs.1,17,00,000/- (One Crore Seventeen Lacs Only) the services rendered by them are found satisfactory and we wish them every success in their future projects.

For Tata Housing Development Co. Ltd.

B.R. Kulkarni

Project Manager
(B.R.Kulkarni)



NIRMAL LIFESTYLES LTD.

Opp. Nirmal Nagar, L. B. S. Marg,
Mulund (West), Mumbai - 400 080.
Tel. : 5597 3180/81/82 • Telefax : 5597 3182
E-mail : nirmalgroup@vsnl.com • <http://www.nirmalhomes.com>



DATE:08-02-20003

To,
PRABHAT POWERTECH PVT. LTD.
124,Ashok Service Indl. Estate,
Near Sangrila Biscuit, L.B.S. Marg,
Bhandup (w), Mumbai - 400 078.

Sub- Electrical Work For Commercial Project at Nirmal Lifestyle,
L. B. S. Marg, Mulund (w), Mumbai 400080.

Ref: As per discussion meeting held on 01-02-03

Dear Sir,

With reference to your revised offer, given verbally at discount rate 9.55% excluding Tender item nos. 5,9a,9b,&13. We are pleased to inform you that we intend to offer the job of Electrical work for commercial project as per tender conditions & without maintenance contract beyond defect liability period at Nirmal Lifestyles, Mulund to M/s Prabhat Powertech Pvt. Ltd., Mumbai. The contractor shall not sub-let any work or part of work without the approval of the Project Manager. Also, if work progress & quality not satisfactory then contractor may be terminate with 3 days notice.

Payment condition are revised as follows:

1. 10% advance along with work order.
2. For purchase of major items payment will be released by P.D.C. against Performa.
3. Retention of 5% will be released after submission of performance Back guarantee of same amount & period.

The work order for the above mentioned job would be given to you at the earliest. We kindly request to you start the work urgently.

Thanking You,
Yours truly,

Dharmesh Jain.
M.D.

Phones: { 522985
522983
527227

CHEMBUR HOTELS PVT. LTD.

HOTEL PEARL Plot No. 8, D. K. Sandu Marg, 19th Read Corner, Chembur, Bombay-400 071.

Ref. No.

Date: 8th July, 68

TO WHOMSOEVER IT MAY CONCERN
.....

This is to Certify that M/s. Prabhat Electronic & Electricals are our Electrical Contractors for our 50 roomed 4 Star Hotel Project at Chembur. The job calls for high technical knowledge and specifications and they have successfully carried out the job to our entire satisfaction.

We have no hesitation in recommending their services to other organisations.

for CHEMBUR HOTELS PVT.LTD.


/ (V.N. RAIKAR)

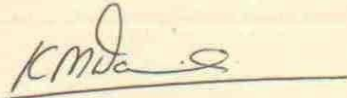
6/12/94

TO WHOMSOEVER IT MAY CONCERN

This is to certify that M/s Prabhat Electronic & Electricals are carrying out Electrification Work for Residential Project 'Siddhachal' for M/s Kalpataru Soham Property Developers Pvt. Ltd. at Thane, for which project we are the Electrical Consultants.

We have found them to be well organised and their work is found to be satisfactory in all respects.

For Voltech Electro-mechanicals



K. M. DARUVALA

Telephones :
2837489-91
2837997
2021169
2021761
Fax : 2028873

TANNA BUILDERS PRIVATE LIMITED

Devidas Mansion, 3rd floor, Mereweather Road, Colaba, Mumbai - 400 039
Email : goldcrest@vsnl.com

Date : 18.05.2001

TO. WHOMSOEVER IT MAY CONCERN

This is to certify that M/s. PRABHAT POWERTECH PVT. LTD. a electrical contractor has successfully carried out our project M/s. Tanna Residency at Prabhadevi, Mumbai and have completed the project within the stipulated period and their job is found to be satisfactory.

For TANNA BUILDERS PVT. LTD.



PROJECT MANAGER
(Prashant Karkhanis)

Roma Builders Pte. Ltd.



Hiranandani

5th April, 2003

TO WHOMSOEVER IT MAY CONCERN

This is to certify that M/s. Prabhat Electronic & Electricals have successfully completed the electrical work of our Residential building 'EROS' at Hiranandani Estate Thane, consisting of 42 flats. The value of the work is Rs.12,00,000/- (Rupees twelve Lacs Only). The project has been satisfactorily executed in a professional manner with good team of Engineers and Technicians in accordance with our stringent quality standards. We wish them every success in their future projects.

for Roma Builders Pte. Ltd.

C.K. Pithawalla

Vice President Projects.



**AL-HAMD HOSPITALS
&
MEDICAL RESEARCH FOUNDATION**

(Regd. under Bombay Public Trust Act, 1950)

55/55-A, Eleven Star Apartment, Morland Road, Mumbai - 400 008. Tel. : 2307 6554

Date :- 23/06/2010.

TO WHOMSOEVER IT MAY CONCERN.

This is to certify that M/s. **Prabhat Powertech Pvt Ltd** have successfully completed Electrical Installation of our 100 Bedded Multispecialty Hospital. The value of work is Rs 150 Lacs. The project was designed and monitored by M/s. Hydro Mechanical Consultants and completed within the stipulated period to the best of our satisfaction.

We wish them a bright future ahead.

For Kalsekar Hospital


Trustee

**AMBIANCE VENTURES ESTATES
& DEVELOPEMENTS PVT. LTD.**

1,187 / 60, SHIVAJINAGAR, J.M. ROAD,
PUNE - 411 005.
TEL.: 66047000 FAX : (020) 25535772

Date : 4th May 2008

PERFORMANCE CERTIFICATE

This is to certify that M/s. Prabhat Powertech Pvt. Ltd. have successfully completed our 32 storied Residential Tower named as "**DURGAMATA TOWERS**" with Super Exclusive Apartments, Swimming Pool, Car Parking etc at Cuff Parade, Mumbai with the project value costing to 100 Laes.

The services rendered found satisfactory and we wish them success in all their future projects.

For D.S. Kulkarni Developers Limited


Authorised Signatory



MARATHON

Redefining Real Estate
Redefining Infrastructure

MARATHON NEXTGEN REALTY LTD.

Oppo. Peninsula Corporate Park,
Off Ganpatrao Kadam Marg,
Lower Parel, Mumbai - 400 013.
Tel.: +91-22-2496 3560 / 3689.
Fax: +91-22-2596 3547.
E-mail: mktg@marathonrealty.com
Website: www.marathonnextgen.com

TO WHOMSOEVER IT MAY CONCERN

This is to certify that M/s. Prabhat Powertech Pvt. Ltd., our appointed Electrical Contractor have successfully completed Internal and External Electrical work at Marathon Nextgen Era having 4 Wings - 35 storied tower with 240 flats.

They have executed the job with complete co-ordination with MIVAN Shuttering matching the slab cycle of 5 to 6 days and completed the job within the stipulated time schedule.

They have also executed the work of Security system, Access control, Public Address system, 22 KV Substation etc.

The project value accounted is **Rs. 10.43** Crore.

We wish them success in all their future projects.

Thanking you,

Yours truly,
for **MARATHON NEXTGEN REALTY LTD.**


Authorized Signatory



Date: 10th September 2012

To Whomsoever It May Concern.

This is to certify that **M/s. Prabhat Powertech Pvt. Ltd.** have successfully completed the Electrification Work of our Project at **Ajit India Private Limited**, B-21/24, Wagle Industrial Estate, Road No. 16, Thane – 400 604.

The Project has been satisfactorily executed in a professional manner with good team of engineers and technicians in accordance with our stringent quality standards. We wish them every success in their Future projects.

For Ajit India Private Limited

A handwritten signature in black ink, appearing to read "Anoop Chopra", is written over a vertical line.

Anoop Chopra
Authorized Signatory

Regd. Office & Works : B 21/24, wagle industrial estate, road no. 16, Thane-400 604
Telefax : 91-22-2582 1358, 2580 0231, 2582 0792
E-mail : info@ajitindia.co.in • website : www.ajitindia.co.in

the pioneers of architectural aluminium

MUSTANG SOFTWARE PRIVATE LIMITED

208, Parvati Ind. Estate, Sunmill Compound, Lower Parel, Mumbai - 400 013.
Tel : 022-40502900 • Fax : 022-40502901 • Email : ashetty@mirahgroup.com

Date: 10th September 2012

To Whomsoever It May Concern.

This is to certify that **M/s. Prabhat Powertech Pvt. Ltd.** have successfully completed the Electrification Work of our IT Park Project at **Mustang Software Private Limited** at **R-693, Rabale**

The Project has been satisfactorily executed in a professional manner with good team of engineers and technicians in accordance with our stringent quality standards. We wish them every success in their future projects.

For Mustang Software Private Limited


Anoop Chopra
Authorized Signatory



18 September 2012

To Whomsoever It May Concern.

This is to certify that **M/s. Prabhat Powertech Pvt. Ltd.** have taken the electrification work of our **Eaze Zone Mall** at Location: **Goregaan, Mumbai , Commercial Shopping Mall** which is under progress.

The project has been satisfactorily executed in a professional manner with good team of engineers and technicians in accordance with our stringent quality standards. We wish them every success in their future projects.

For **Keystone Realtors Pvt Ltd**

Lyla Paul
(GM-Contracts)

KEYSTONE REALTORS PVT. LTD.

Corp. & Reg. Office : 702, NATRAJ, M. V. Road Junction, Western Express Highway, Andheri (East),
Mumbai - 400 069. Tel.: +91 - 22 - 6676 6888 • Fax: +91 - 22 - 6676 6999.
E-mail: comehome@rustomjee.com • Website : www.rustomjee.com



CHHAGANLAL KHIMJI AND CO.PVT.LTD


Corporate office: 702, Marathon Max, Mulund-Goregaon link road, Mulund (W), Mumbai-400080.
Tel: 6724848 Fax: 25646008

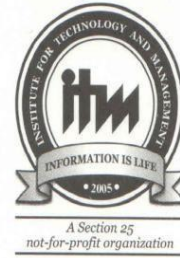
To Whomsoever It May Concern

This is to certify that **M/s. Prabhat Powertech Pvt. Ltd.** is nearing to complete the electrification work of our Marathon **Monte Vista (RESIDENTIAL)** at Location: **Mulund, Mumbai.** Consisting of 33 Storyed Residential Tower Complete With Mivan Shuttering Environment, Swimming Pool, Health Spa, Car Parking Etc.

The project has been satisfactorily executed in a professional manner with good team of engineers and technicians in accordance with our stringent quality standards. We wish them every success in their future projects.

For **Chhaganlal Khimji And Co.Pvt.Ltd**


Gurunath Dhavan
Sr.Estimation Manager



TO WHOMSOEVER IT MAY CONCERN

This is to certify that M/s. Prabhat Powertech Pvt. Ltd. have Designed, Fabricated, Supplied, Installed, Tested & Commissioned at our site, all our Electrical Panel requirement.

They are well equipped with all the ultra - modern manufacturing facilities, right from testing to commissioning equipments. They also have highly professional team of engineers required for the execution of the job.

We were satisfied with their prompt service & online technical assistance.

We wish them every success in their future projects.

For ITM Institute of Technology and Management

For Institute For Technology & Management

S.K. Samanta
Director (Projects)

Director (Projects)

Institute for Technology and Management

MARATHON REALTY PVT. LTD.



702, Marathon Max,
Mulund-Goregaon Link Road,
Mulund (West), Mumbai - 400 080.
Tel.: +91-22-6724 8484 / 88
Fax: +91-22-6772 8408
E-mail: marathon@marathonrealty.com
Website: www.marathonrealty.com
CIN: U70100MH1994PTC084037

May 08, 2019

TO WHOMSOEVER IT MAY CONCERN

This is to certify that M/s.Prabhat Powertech Pvt. Ltd have successfully completed the electrification work of our (residential/hospital/shopping mall/ Office/Commercial) at our project "**Marathon Futurex**" C.S.No.166 of Lower Parel Div., N.M.Joshi Marg, G/S Ward, Mumbai.

The value of the work is Rs.6,54,92,338/-(Rupees Six Crore Fifty Four Lakhs Ninety Two Thousand Three Hundred Thirty Eight only) without tax.

They have provided us with innovative solutions and assisted in both budget considerations and installation options. The project has been satisfactorily executed in a professional manner with good team of engineers and technicians in accordance with our stringent quality standards.

We have no hesitation in recommending Prabhat Powertech Pvt. Ltd.for any project requiring electrical input of any type. We wish them bright future ahead.

For **MARATHON REALTY PVT.LTD.**

Gurunath S

AUTHORIZED SIGNATORY



Date: 10th Oct 2015

TO WHOMSOEVER IT MAY CONCERN

This is to certify that M/s. Prabhat Powertech Pvt. Ltd. have successfully completed the electrical work of two wings in our residential building Serenity, Raheja Reflections II, at kandivali (E), Mumbai. These wings in the building are of 22 storeys and consist of 170 flats.

The Total Value of this work is Rs. 3.05 Crs. (Rupees three Crores Five lakhs only).

The services by M/s. Prabhat Powertech Pvt. Ltd. were found satisfactory.

We wish them all the success in their future Projects.

For, Raheja Universal (Pvt) Ltd.

Tushar Chaudhary
(Project Head)

SPCPL - Agent of the Court Receiver High Court Bombay

70, Nagindas Master Road, Fort, Mumbai - 400 023.

Tel.: 022 6749 0000 (Board) / Extension: 0133 / 0452 / 0258

To Whom So Ever It May Concern

This is to certify that **M/s. Prabhat Powertech Pvt. Ltd.** has successfully completed the electrical work of our residential Project at Tardeo, Mumbai named "CRESCENT TOWER" consisting of 2 basements, 4 podiums and 22 typical floors. The value of the work was Rs. 1,54,01,004 (Rupees One Crore Fifty-Four Lacs One Thousand Four only).

The project has been satisfactorily executed in a professional manner with good team of engineers and technicians in accordance with our stringent quality standards. We wish them every success in their future projects.

Mr. Sreeram Kuppa

Mr. Sreeram Kuppa,
Exe. Vice President (Operations).




Ref No. : SDCPL/OPT/19-20/13NOV19/1

TO WHOM SO EVER IT MAY CONCERN

This is to certify that **M/s. Prabhat Powertech Pvt. Ltd.** has successfully completed the electrical work of residential Project at Samta Nagar, Kandivali (E), Mumbai named "Alpine Tower 1 (WO No 8200001373) & Podium (Wo. No. 8200001180)". The total value of the work was Rs. 6,18,55,344/- (Rupees Six Crore Eighteen Lacs Fifty Five Thousand Three Hundred Forty Four only).

The project has been satisfactorily executed in a professional manner with good team of engineers and technicians in accordance with our stringent quality standards. We wish them every success in their future projects.

For SD Corporation Pvt. Ltd.



Authorized Signatory

TO WHOMSOEVER IT MAY CONCERN

This is to certify that M/s. Prabhat Powertech Pvt. Ltd. has successfully completed the entire Electrical Installation work including Fire Alarm System, Wi-Fi / LAN networking & Internal electrification of our new " B-23 Faculty Housing Society 16 Storey Residential Tower " At IITB, Powai, Mumbai,

We highly appreciate their commitment towards maintaining high quality work , value addition & professionalism.

We earnestly wish them progress & success in all their future endeavors.

For Golani Brothers



Kishore Golani

Partner

Dt. 20.09.2013

